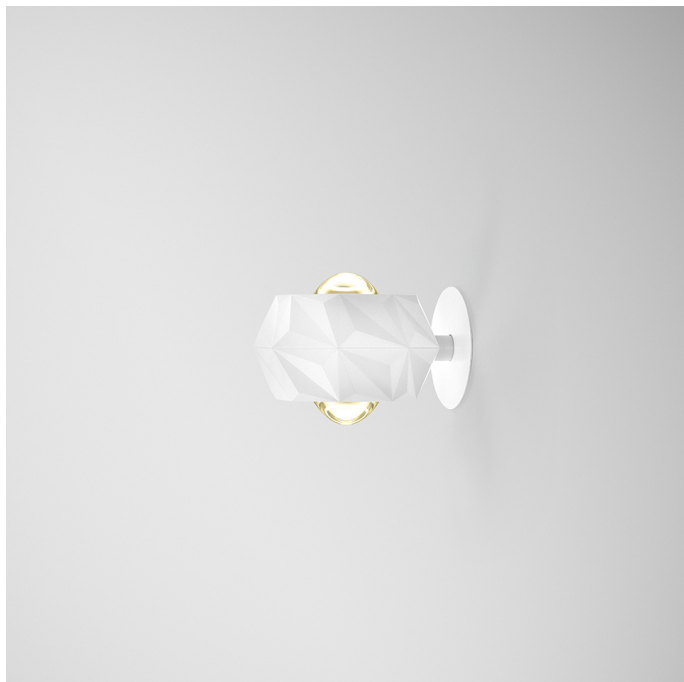
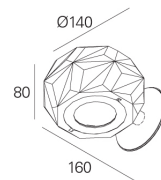
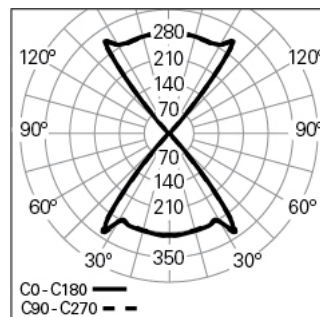


6TH ELEMENT /W D/I D140 930 W 80°/80°

ARCHITECTURAL LIGHTING

90279L0160W0B80**Light distribution**

L=175mm

PRODUCT DESCRIPTION

Application Areas: Offices, Hotels and residential, Public spaces, Retail, Education, Health and care

Mounting Type: Wall mounted

Control Gear Included: No

6TH ELEMENT /W D/I D140 930 W 80°/80°**CHARACTERISTICS**

Luminaire Type: Round downlight

Luminaire Module: Individual

Insulation Class: III

Ingress Protection (IP): 40

Ambient Temperature Range (°C):]-5, 25[

Warranty (Years): 5

Current Supply Cable Entry Point: Back

MATERIALS

Body Material: Die-cast aluminium

Finishing: Epoxy polyester powder coated

Colour: White (W)

Glow-wire Resistance (°C): 650

OPTICAL SYSTEM

Optical System: Lens

Light Distribution: Direct / Indirect

Beam Angle (°): 78/78

Adjustable: Rotation

TECHNICAL DATA

Light Source: LED

Input Power (W): 17

Power Factor (λ): 1

Luminaire Luminous Flux (lm): 2059

Luminaire Efficacy (lm/W): 121

Unified Glare Rating (UGR): <22

LED Lifetime - Rated Median Useful Life: 50.000h @ L80, B10, Ta 25°C

CCT - Correlated Colour Temperature (K): 3000

Colour Rendering Index (CRI): >90

Chromaticity Tolerance (MacAdam step): <3

This Product Contains a Light Source of Energy Efficiency Class: E

LED Module Forward Voltage Range (VF): 34,4

Input luminaire current (mA): 500

DIMENSIONS

L - Length (mm): 175

W - Width (mm): 140

H - Height (mm): 80

NOTES

- To complete the product it is necessary to order the ceiling rose separately.