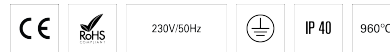


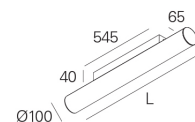
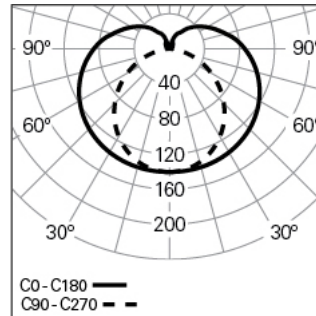
TALEA GLARE /C L1998 BLINE HF 840 B

TUBULAR LUMINAIRES

90429L170EB0000



Light distribution



L=1998mm

PRODUCT DESCRIPTION

Application Areas: Offices, Hotels and residential, Public spaces, Retail, Education, Health and care

Mounting Type: Surface mounted

Control Gear Included: Yes

Control Gear: LED driver 220-240VAC-50/60Hz

Input Driver Voltage: 220-240V-50/60Hz

Power Factor (λ): 0,96

Luminaire Luminous Flux (lm): 4204

Luminaire Efficacy (lm/W): 131

Unified Glare Rating (UGR): <19

LED Lifetime - Rated Median Useful Life: 60.000h @ L90, B10, Ta 25°C

CCT - Correlated Colour Temperature (K): 4000

Colour Rendering Index (CRI): >80

Chromaticity Tolerance (MacAdam step): <3

LED Module Forward Voltage Range (VF): 33,1

Power Supply Dimming: ON/OFF

Central Battery Emergency Lighting System (VDC): 176-280

Maximum of Luminaires by Magnetic Circuit Breaker B16: <62

Inrush Current (A): 20

Pulse Duration (μ s): 161

TALEA GLARE /C L1998 BLINE HF 840 B

CHARACTERISTICS

Luminaire Type: Straight line luminaire

Insulation Class: I

Ingress Protection (IP): 40

Ambient Temperature Range (°C):]-5, 25[

Warranty (Years): 5

Current Supply Cable Entry Point: Back

DIMENSIONS

L - Length (mm): 1998

H - Height (mm): 140

D - Diameter (mm): 100

Net Weight (kg): 6.1

MATERIALS

Body Material: Extruded aluminium profile

Finishing: Epoxy polyester powder coated

Colour: Black (B)

Glow-wire Resistance (°C): 960

OPTICAL SYSTEM

Optical System: bLINE - Opal diffuser

Light Distribution: Direct

Beam Angle (°): 183

TECHNICAL DATA

Light Source: LED

Input Power (W): 32