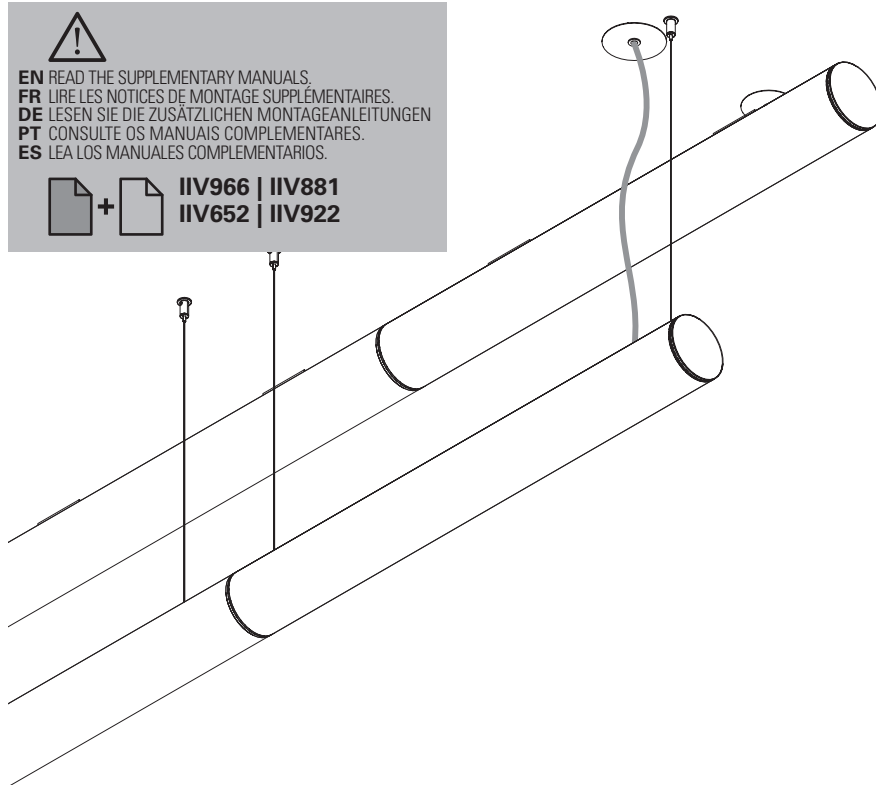


TALEA Line | TALEA HRZ Line**EN** INSTALLATION INSTRUCTIONS**FR** NOTICE DE MONTAGE**DE** MONTAGEANLEITUNG**PT** INSTRUÇÕES DE MONTAGEM**ES** INSTRUCCIONES DE MONTAJE

EN READ THE SUPPLEMENTARY MANUALS.
FR LIRE LES NOTICES DE MONTAGE SUPPLÉMENTAIRES.
DE LESEN SIE DIE ZUSÄTZLICHEN MONTAGEANLEITUNGEN
PT CONSULTE OS MANUAIS COMPLEMENTARES.
ES LEA LOS MANUALES COMPLEMENTARIOS.



IIV966 | IIV881
IIV652 | IIV922



Order code / Code com. / Bestell-Nr. / Código / Código: 90439... | 90754...



IP 40 960°C

230V/50Hz



EN Carefully read the installation instructions provided before installing the device. Safety and Maintenance: Scan here.

FR Lire attentivement les notices de montage avant l'installation de l'appareil. Sécurité et Entretien: Sancez ici.

DE Bitte lesen die mitgelieferte Montageanleitung vor de Montage des Geräts. Sicherheit und Wartung: Hier scannen.



PT Leia atentamente as instruções de montagem fornecidas antes de instalar o aparelho. Segurança e Manutenção: Scan aqui.

ES Lea atentamente las instrucciones de montaje proporcionadas antes de instalar el aparato. Seguridad y Mantenimiento: Escanea aqui.

TALEA Line | TALEA HRZ Line



TALEA Line

 (mm)	 (mm)
Ø100x595	Ø100x1995
Ø100x875	Ø100x2275
Ø100x1155	Ø100x2555
Ø100x1435	Ø100x2835
Ø100x1715	

TALEA HRZ Line

 (mm)
(Ø100) 650x650

TOOLS | OUTILS | WERKZEUG | FERRAMENTAS | HERRAMIENTAS

Umbrako
Phillips screwdriver

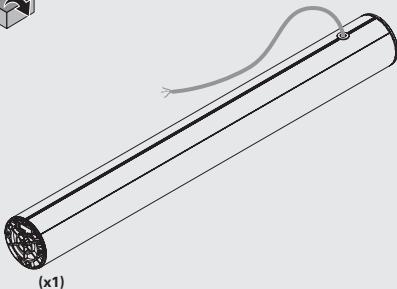


EN USE GLOVES.
FR UTILISEZ DES GANTS.
DE HANDSCHUHE BENUTZEN.
PT UTILIZE LUVAS.
ES USE GUANTES.



TALEA Line

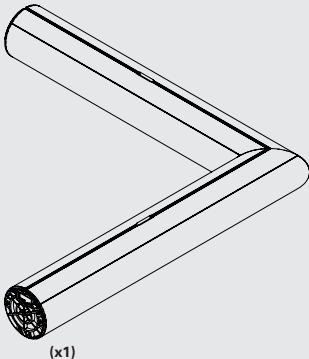
90439...



(x1)

TALEA HRZ Line

90754...



(x1)

START KIT KIT DÉBUT DE LIGNE START KIT START KIT START KIT

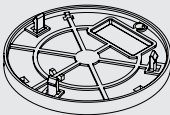
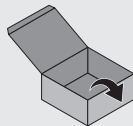
92270...



(x2)

BODY CONNECTOR KIT KIT UNION VERBINDUNGS KIT KIT DE UNIÃO KIT DE UNIÓN

93180...



(x1)

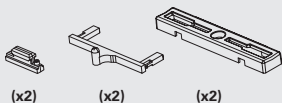


(x1)

**FIXATION KIT
KIT DE FIXATION
BEFESTIGUNGSSET
KIT DE FIXAÇÃO
KIT DE FIJACIÓN**



926400



(x2)

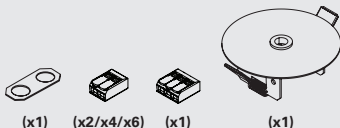
(x2)

(x2)

**CEILING ROSE
PATÈRE DE SUSPENSION
DECKENDOSE
CAIXA DE ALIMENTAÇÃO
BASE DE TETO**

971300...

RECESSED CEILING ROSE T5 D90
PATÈRE DE SUSPENSION ENCASTRÉE T5 D90
DECKENDOSE ZUM EINBAU T5 D90
CAIXA DE ALIMENTAÇÃO ENCASTRAR T5 D90
BASE DE TETO DE EMPOTRAR T5 D90



(x1)

(x2/x4/x6)

(x1)

(x1)

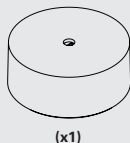
**CEILING ROSE
PATÈRE DE SUSPENSION
DECKENDOSE
CAIXA DE ALIMENTAÇÃO
BASE DE TETO**

979000...

SURFACE MOUNTED CEILING ROSE T64 D85
PATÈRE DE SUSPENSION SAILLIET64 D85
DECKENDOSE ZUM ANBAU T64 D85
CAIXA DE ALIMENTAÇÃO SALIENTE T64 D85
BASE DE TETO DE SUPERFÍCIE T64 D85



(x7)



(x1)

**S5 L1500 SUSPENSION
SUSPENSION S5 L1500
SEILABHÄNGUNG S5 L1500
SUSPENSÃO S5 L1500
SUSPENSIÓN S5 L1500**



910409



(x2)

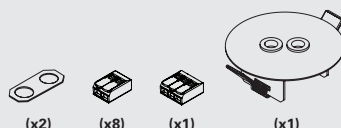
(x2)

(x2)

(x2)

978700...

RECESSED CEILING ROSE T27 D90
PATÈRE DE SUSPENSION ENCASTRÉE T27 D90
DECKENDOSE ZUM EINBAU T27 D90
CAIXA DE ALIMENTAÇÃO ENCASTRAR T27 D90
BASE DE TETO DE EMPOTRAR T27 D90



(x2)

(x8)

(x1)

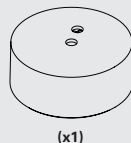
(x1)

979003...

SURFACE MOUNTED CEILING ROSE T69 D85
PATÈRE DE SUSPENSION SAILLIET69 D85
DECKENDOSE ZUM ANBAU T69 D85
CAIXA DE ALIMENTAÇÃO SALIENTE T69 D85
BASE DE TETO DE SUPERFÍCIE T69 D85



(x9)

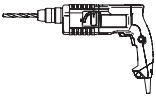


(x1)

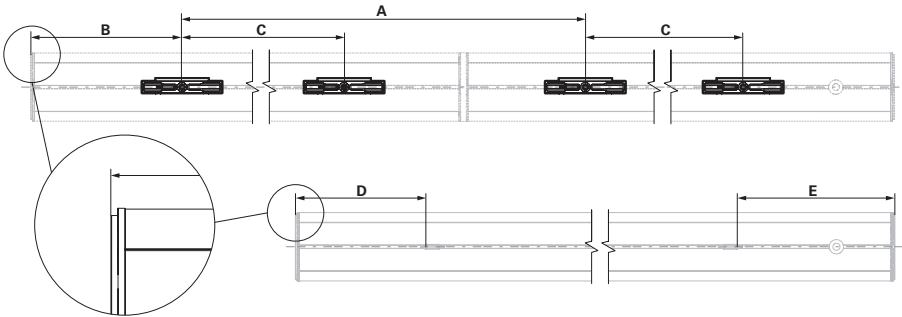


TALEA Line

SURFACE MOUNTED
SAILLIE
ANBAU
SALIENTE
SUPERFICIE

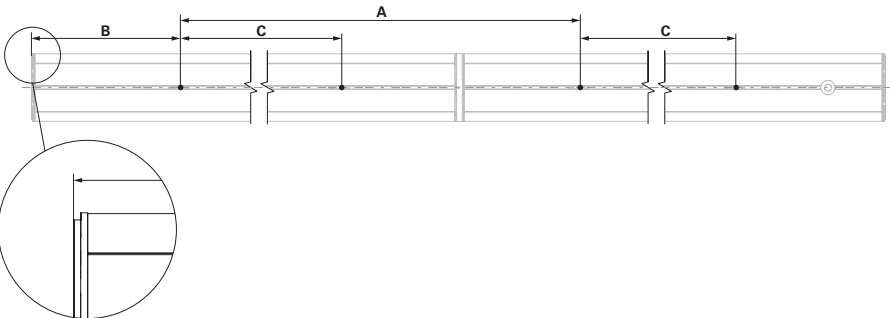


TALEA Line													
Ø (mm)	A									B	C	D	E
-	Ø100x590	Ø100x870	Ø100x1150	Ø100x1430	Ø100x1710	Ø100x1990	Ø100x2270	Ø100x2550	Ø100x2830	-	-	-	-
Ø100x590	599	639	709	779	849	919	989	1059	1129	180	235	150	190
Ø100x870	839	879	949	1019	1089	1159	1229	1299	1369	220	435	190	230
Ø100x1150	1049	1089	1159	1229	1299	1369	1439	1509	1579	290	575	260	300
Ø100x1430	1259	1299	1369	1439	1509	1579	1649	1719	1789	360	715	330	370
Ø100x1710	1469	1509	1579	1649	1719	1789	1859	1929	1999	430	855	400	440
Ø100x1990	1679	1719	1789	1859	1929	1999	2069	2139	2209	500	995	470	510
Ø100x2270	1889	1929	1999	2069	2139	2209	2279	2349	2419	570	1135	540	580
Ø100x2550	2099	2139	2209	2279	2349	2419	2489	2559	2629	640	1275	610	650
Ø100x2830	2309	2349	2419	2489	2559	2629	2699	2769	2839	710	1415	680	720



SUSPENDED
SUSPENDU
ABGEHÄNGTE MONTAGE
SUSPENSO
SUSPENDIDO

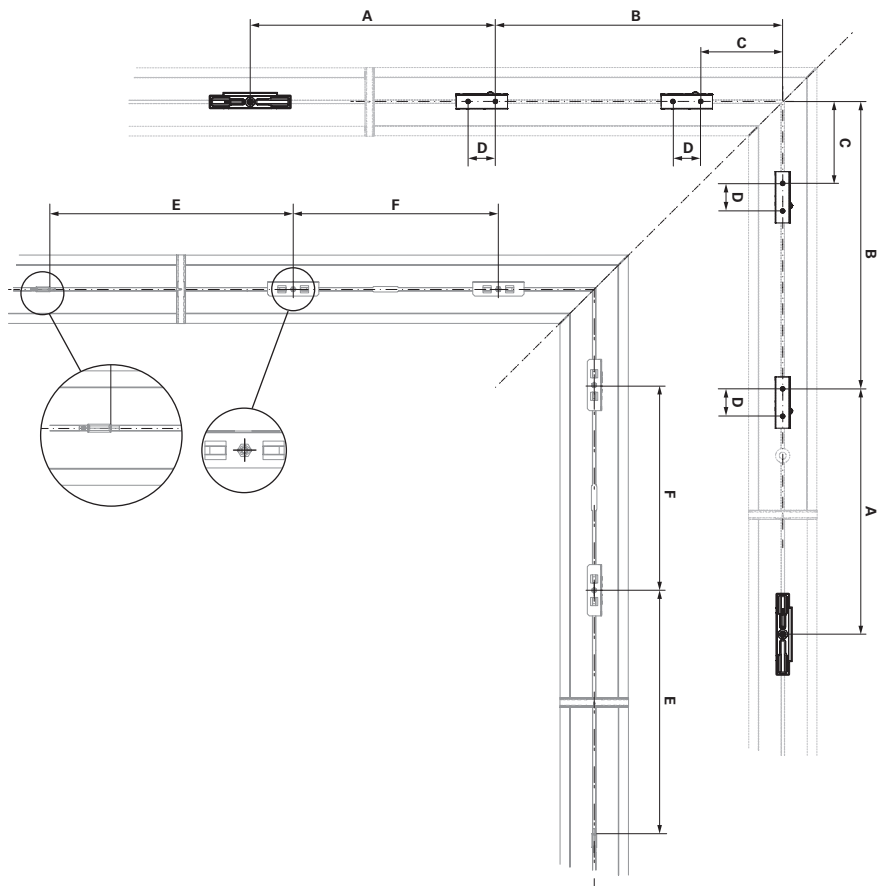
TALEA Line											
Ø (mm)	A									B	C
-	Ø100x590	Ø100x870	Ø100x1150	Ø100x1430	Ø100x1710	Ø100x1990	Ø100x2270	Ø100x2550	Ø100x2830	-	-
Ø100x590	599	639	709	779	849	919	989	1059	1129	180	235
Ø100x870	839	879	949	1019	1089	1159	1229	1299	1369	220	435
Ø100x1150	1049	1089	1159	1229	1299	1369	1439	1509	1579	290	575
Ø100x1430	1259	1299	1369	1439	1509	1579	1649	1719	1789	360	715
Ø100x1710	1469	1509	1579	1649	1719	1789	1859	1929	1999	430	855
Ø100x1990	1679	1719	1789	1859	1929	1999	2069	2139	2209	500	995
Ø100x2270	1889	1929	1999	2069	2139	2209	2279	2349	2419	570	1135
Ø100x2550	2099	2139	2209	2279	2349	2419	2489	2559	2629	640	1275
Ø100x2830	2309	2349	2419	2489	2559	2629	2699	2769	2839	710	1415



TALEA HRZ Line

SURFACE MOUNTED
SAILLIE
OBERFLÄCHEN MONTAGE
SALIENTE
SUPERFICIE

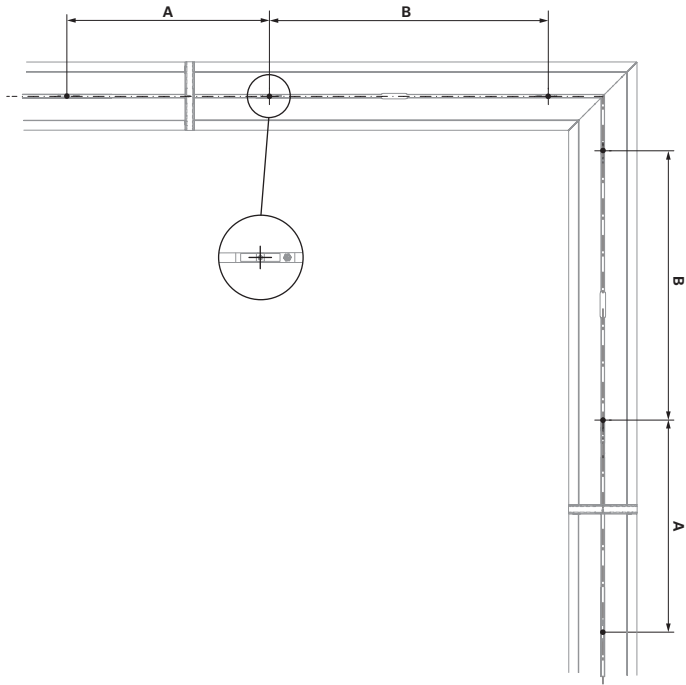
TALEA HRZ						
⬡ (mm)	A	B	C	D	E	F
(Ø100) 650x650	366,5	420	120	40	316,5	300



TALEA HRZ Line

SUSPENDE
SUSPENDU
ABGEHÄNGTE MONTAGE
SUSPENSO
SUSPENDIDO

TALEA HRZ		
 (mm)	A	B
(Ø100) 650x650	316,5	300



TALEA LINE



EN SURFACE MOUNTED

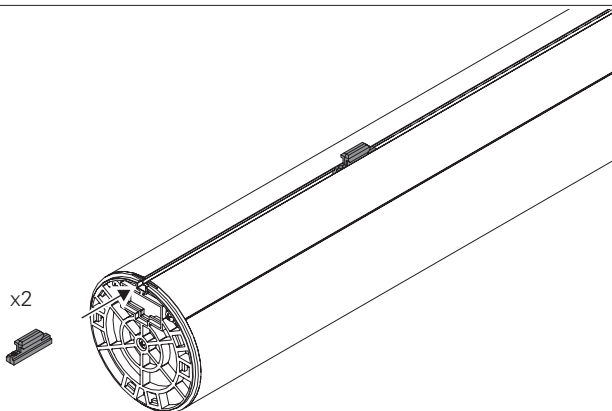
FR SAILLIE

DE OBERFLÄCHEN MONTAGE

PT SALIENTE

ES SUPERFICIE

1



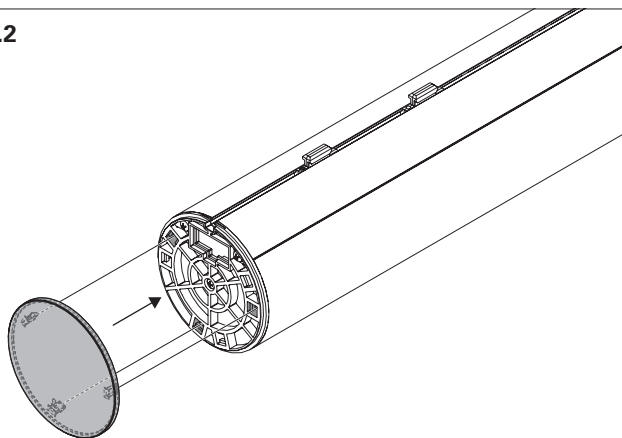
FOR MOUNTING THE BODY CONNECTOR
KIT READ:
POUR LE MONTAGE DES UNION KIT LIRE:
VERBINDUNG, LESEN SIE:
PARA A MONTAGEM DOS KIT DE UNIÃO LER:
PARA MONTAR LOS KIT DE UNION LEER:



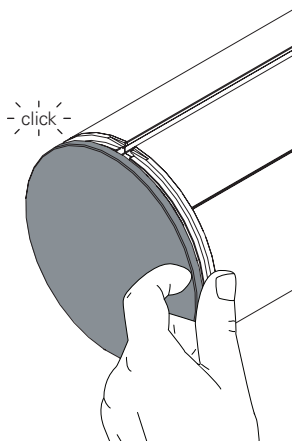
IIV922

1.2

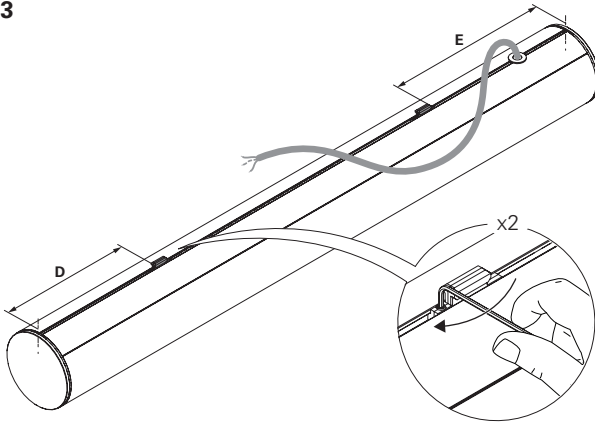
1.



2.



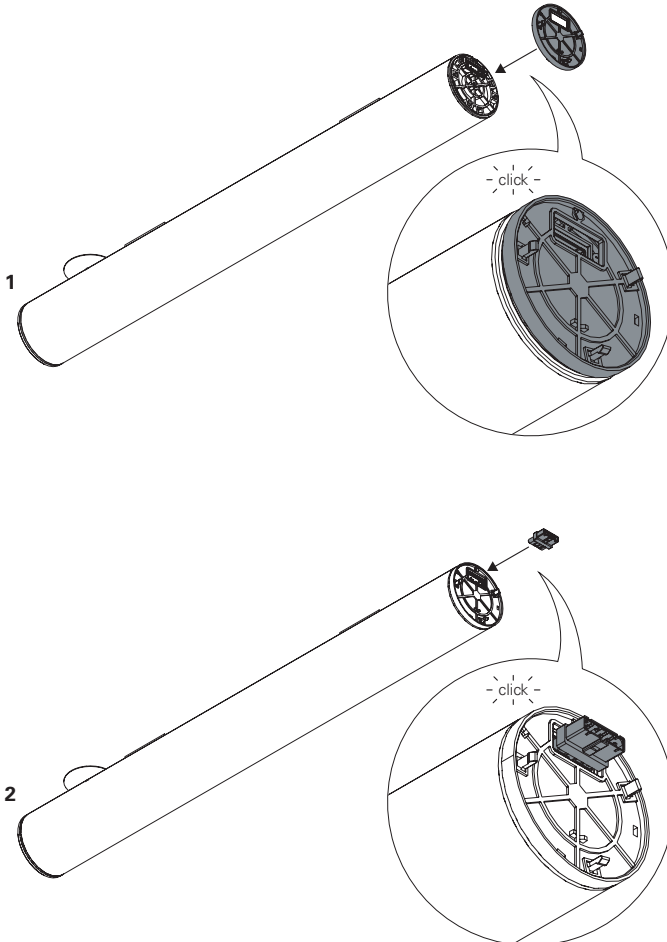
1.3

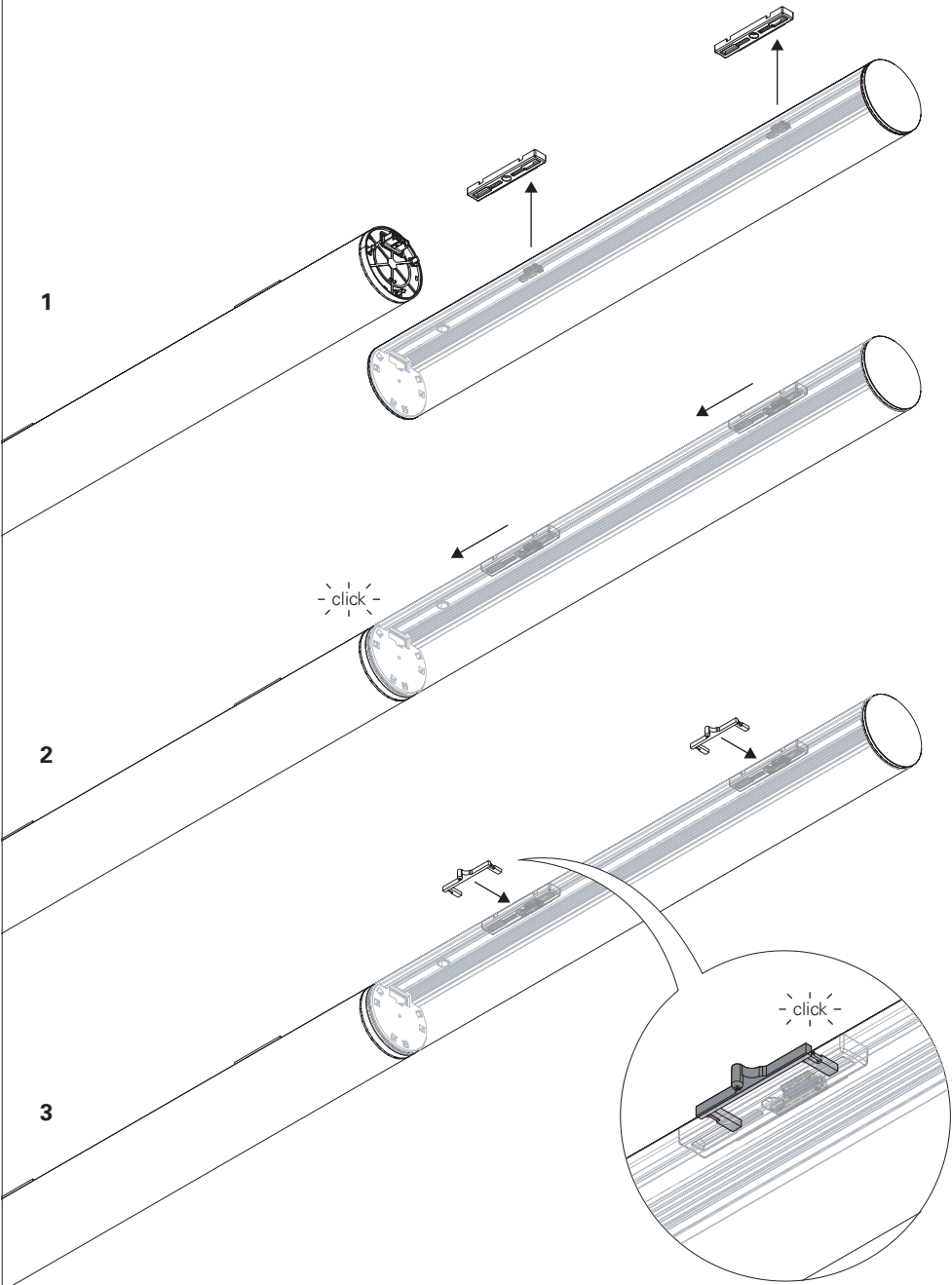


FOR MOUNTING THE CEILING ROSES READ:
POUR LE MONTAGE DES PATÈRE DE
SUSPENSIONS LIRE:
FÜR DECKENDOSE, LESEN SIE:
PARA A MONTAGEM DAS CAIXAS DE
ALIMENTAÇÃO LER:
PARA MONTAR LAS BASES DE TECHO LEER:

 **IIV966 |**
IIV881

1.4





TALEA Line



EN SUSPENDED

FR SUSPENDU

DE ABGEHÄNGTE MONTAGE

PT SUSPENSO

ES SUSPENDIDO



EN FOR LENGTHS OVER L1700MM, A CURVATURE OF UP TO 1% IS ACCEPTABLE WITHIN THE SPECIFIED TOLERANCE AND CAN BE CORRECTED BY ADJUSTING THE POSITIONING OF THE SUSPENSION POINTS.

FR POUR LES LONGUEURS À PARTIR DE L1700MM, UNE COURBURE MAXIMALE DE 1 % EST ADMISSIBLE, DANS LES LIMITES DE LA TOLÉRANCE PRÉVUE, QUI PEUT ÊTRE CORRIGÉE EN AJUSTANT LE POSITIONNEMENT DES SUSPENSIONS.

DE BEI LÄNGEN AB L1700MM IST EINE VERBIEGUNG VON BIS ZU 1 % INNERHALB DER VORGESEHENEN TOLERANZ ZULÄSSIG, DIE DURCH EINE ANPASSUNG DER POSITIONIERUNG DER AUFHÄNGUNGEN KORRIGIERT WERDEN KANN.

PT NOS COMPRIMENTOS A PARTIR DE L1700MM ADMITE-SE UMA CURVATURA DE ATÉ 1%, DENTRO DA TOLERÂNCIA PREVISTA, QUE PODE SER CORRIGIDA POR MEIO DO AJUSTE NO POSICIONAMENTO DAS SUSPENSÕES.

ES EN LOS TRAMOS A PARTIR DE L1700MM SE ADMITE UNA CURVATURA DE HASTA EL 1 %, DENTRO DE LA TOLERANCIA PREVISTA, QUE PUEDE CORREGIRSE AJUSTANDO LA POSICIÓN DE LAS SUSPENSIONES.

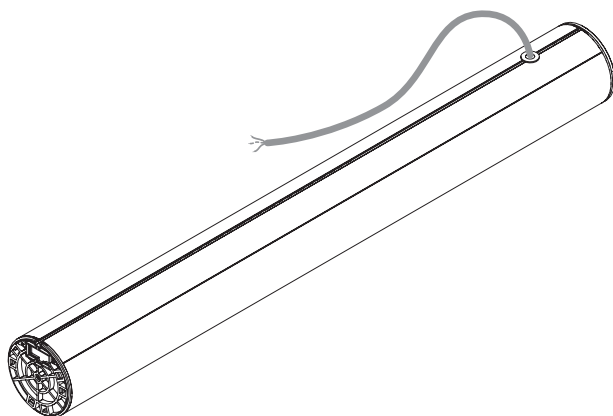
2



FOR SUSPENDED VERSION READ:
POUR LA VERSION SUSPENDUE LIRE:
FÜR DIE HÄNGVERSION BITTE LESEN SIE:
PARA VERSÃO SUSPENSA LER:
PARA LA VERSION SUSPENDIDA LEER:

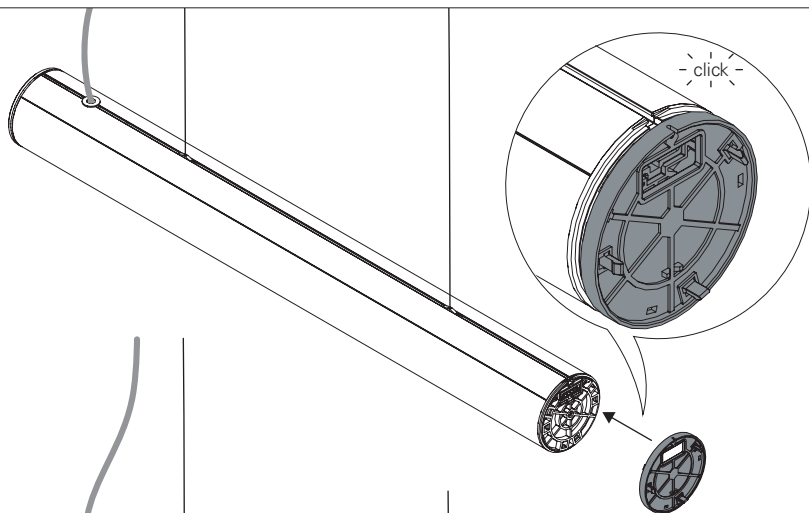


IIV881 | IIV966
IIV652

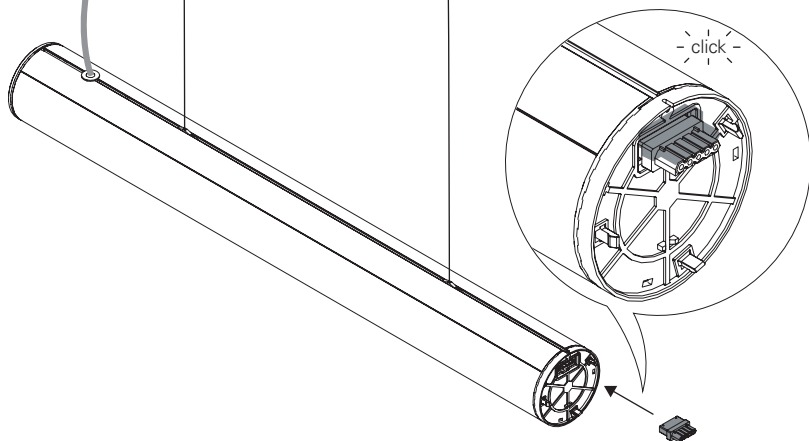


2.1

1

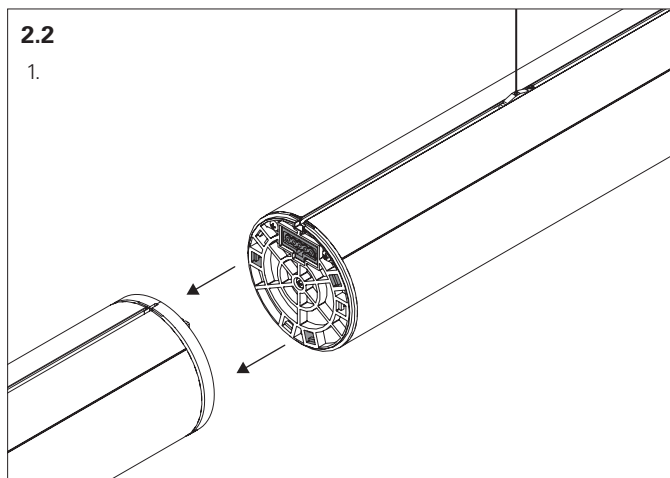


2

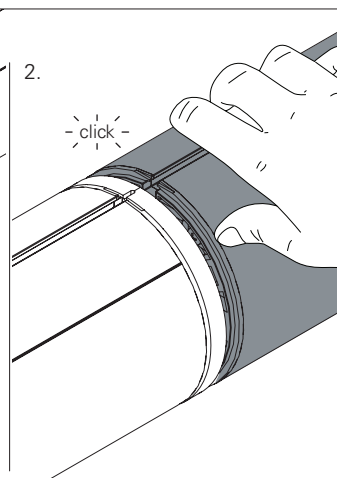


2.2

1.

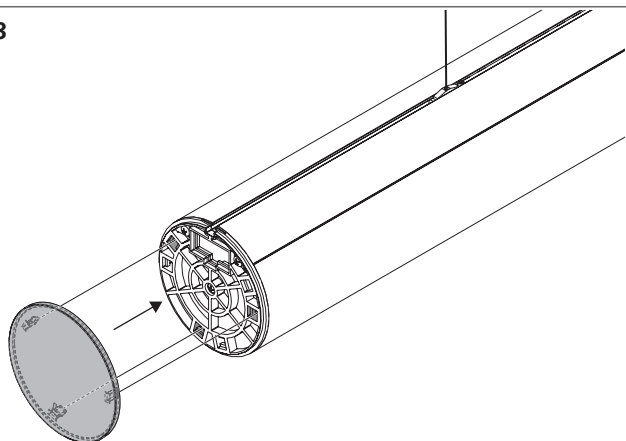


2.



2.3

1.



2.

- click -

