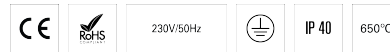


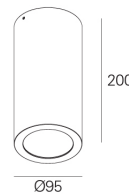
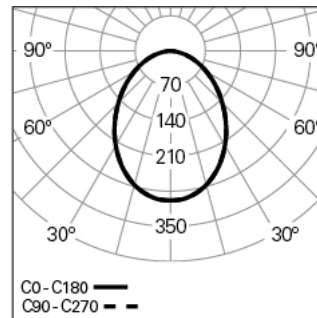
# VEGA D95 LIGHT+ DALI 930 W HO

ARCHITECTURAL LIGHTING

90443L015HW0300



## Light distribution



## PRODUCT DESCRIPTION

**Application Areas:** Offices, Hotels and residential, Public spaces, Retail, Education, Health and care

**Mounting Type:** Surface mounted, Suspended

**Control Gear Included:** Yes

**Control Gear:** LED driver 220-240VAC-50/60Hz

## VEGA D95 LIGHT+ DALI 930 W HO

### CHARACTERISTICS

**Luminaire Type:** Round downlight

**Insulation Class:** I

**Ingress Protection (IP):** 40

**Ambient Temperature Range (°C):** ]-5, 25[

**Warranty (Years):** 5

**Current Supply Cable Entry Point:** Back

### MATERIALS

**Body Material:** Extruded aluminium profile

**Finishing:** Epoxy polyester powder coated

**Colour:** White (W)

**Glow-wire Resistance (°C):** 650

### OPTICAL SYSTEM

**Optical System:** LIGHT+ - Opal diffuser

**Light Distribution:** Direct

**Beam Angle (°):** 89

### TECHNICAL DATA

**Light Source:** LED

**Input Power (W):** 13

**Input Driver Voltage:** 220-240V-50/60Hz

**Power Factor (λ):** 0,81

**Luminaire Luminous Flux (lm):** 1037

**Luminaire Efficacy (lm/W):** 80

**Unified Glare Rating (UGR):** <25

**LED Lifetime - Rated Median Useful Life:** 66.000h @ L90, B10, Ta 25°C

**CCT - Correlated Colour Temperature (K):** 3000

**Colour Rendering Index (CRI):** >90

**Chromaticity Tolerance (MacAdam step):** <3

**This Product Contains a Light Source of Energy Efficiency Class:** E

**LED Module Forward Voltage Range (VF):** 33,6

**Power Supply Dimming:** DALI 2

**Central Battery Emergency Lighting System (VDC):** 176-280

**Maximum of Luminaires by Magnetic Circuit Breaker B16:** <38

**Inrush Current (A):** 30

**Pulse Duration (µs):** 100

### DIMENSIONS

**H - Height (mm):** 200

**D - Diameter (mm):** 95

**Net Weight (kg):** 1.2

### NOTES

- For suspended version it is necessary to order the ceiling rose separately.