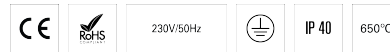


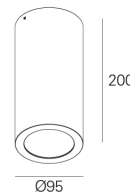
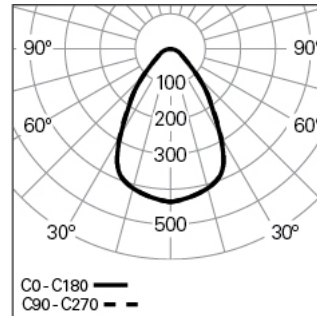
VEGA D95 PRISM+ DALI 930 W LO

ARCHITECTURAL LIGHTING

90445L008HW0300



Light distribution



PRODUCT DESCRIPTION

Application Areas: Offices, Hotels and residential, Public spaces, Retail, Education, Health and care

Mounting Type: Surface mounted, Suspended

Control Gear Included: Yes

Control Gear: LED driver 220-240VAC-50/60Hz

VEGA D95 PRISM+ DALI 930 W LO

CHARACTERISTICS

Luminaire Type: Round downlight

Insulation Class: I

Ingress Protection (IP): 40

Ambient Temperature Range (°C):]-5, 25[

Warranty (Years): 5

Current Supply Cable Entry Point: Back

MATERIALS

Body Material: Extruded aluminium profile

Finishing: Epoxy polyester powder coated

Colour: White (W)

Glow-wire Resistance (°C): 650

OPTICAL SYSTEM

Optical System: PRISM+ - Microprismatic diffuser

Light Distribution: Direct

Beam Angle (°): 69

TECHNICAL DATA

Light Source: LED

Input Power (W): 7

Input Driver Voltage: 220-240V-50/60Hz

Power Factor (λ): 0,7

Luminaire Luminous Flux (lm): 622

Luminaire Efficacy (lm/W): 89

Unified Glare Rating (UGR): <19

LED Lifetime - Rated Median Useful Life: 66.000h @ L90, B10, Ta 25°C

CCT - Correlated Colour Temperature (K): 3000

Colour Rendering Index (CRI): >90

Chromaticity Tolerance (MacAdam step): <3

This Product Contains a Light Source of Energy Efficiency Class: E

LED Module Forward Voltage Range (VF): 32,7

Power Supply Dimming: DALI 2

Central Battery Emergency Lighting System (VDC): 176-280

Maximum of Luminaires by Magnetic Circuit Breaker B16: <38

Inrush Current (A): 30

Pulse Duration (µs): 100

DIMENSIONS

H - Height (mm): 200

D - Diameter (mm): 95

Net Weight (kg): 1.2

NOTES

- For suspended version it is necessary to order the ceiling rose separately.