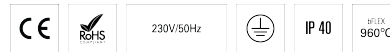


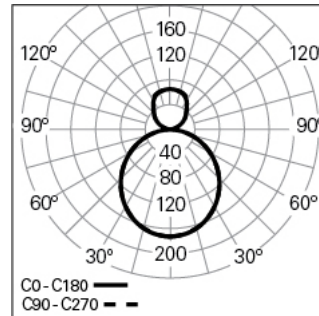
CONCEPT S 35 D/I 45° RIGHT D2926 DALI 840 L MID/END

ARCHITECTURAL LIGHTING

90548R008HL0098



Light distribution



L=1120mm

PRODUCT DESCRIPTION

Application Areas: Architectural, Offices, Hotels and residential, Public spaces, Retail, Art and Culture, Education, Health and care

Mounting Type: Suspended

Control Gear Included: Yes

Control Gear: LED driver 220-240VAC-50/60Hz

Light Source: LED

Input Power (W): 44

Input Driver Voltage: 220-240V-50/60Hz

Power Factor (λ): 0,97

Luminaire Luminous Flux (lm): 4127

Luminaire Efficacy (lm/W): 94

LED Lifetime - Rated Median Useful Life: 70.000h @ L90, B10, Ta 25°C

CCT - Correlated Colour Temperature (K): 4000

Colour Rendering Index (CRI): >80

Chromaticity Tolerance (MacAdam step): <3

LED Module Forward Voltage Range (VF): 24V DC

Power Supply Dimming: DALI 2

Maximum of luminaires by Magnetic Circuit Breaker B16: <45

CONCEPT S 35 D/I 45° RIGHT D2926 DALI 840 L MID/END

CHARACTERISTICS

Luminaire Type: Curved luminaire 1/8 45°

Luminaire Module: Middle / End (MID/END)

Luminaire Orientation: Right

Insulation Class: I

Ingress Protection (IP): 40

Ambient Temperature Range (°C):]-5, 25[

Warranty (Years): 5

Current Supply Cable Entry Point: Back

DIMENSIONS

L - Length (mm): 1120

W - Width (mm): 55

H - Height (mm): 56

D - Diameter (mm): 2926

Net Weight (kg): 3.4

MATERIALS

Body Material: Extruded aluminium profile

Finishing: Epoxy polyester powder coated

Colour: Autumn (L)

Glow-wire Resistance (°C): 960

OPTICAL SYSTEM

Optical System: bFLEX - Opal diffuser

Light Distribution: Direct / Indirect

Beam Angle (°): 111

TECHNICAL DATA

NOTES

- To complete the individual product order bFLEX diffuser, start kit, current supply cable, suspension and ceiling rose. Please order separately;
- To complete the line order bFLEX diffuser, current supply cable, suspensions, start kit and body connector kit. Please order separately;
- Dimensions do not include start kit. To complete the line add 26 mm to the length;
- In order to guarantee a total uniformity of light on the ceiling, the installation must be done at a minimum distance of 500 mm;
- Create your own configurations on CONFIGURATOR.INDELAGUEGROUP.COM;
- The noise level is 20 dB, lower than the typical ambient sound levels

CONCEPT S 35 D/I 45° RIGHT D2926 DALI 840 L MID/END
ARCHITECTURAL LIGHTING

90548R008HL0098

recorded in environments such as libraries and reading rooms.