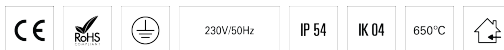
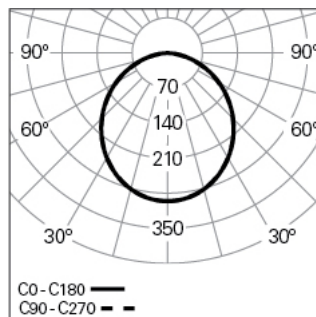


**ROFY 85 IP /C D0600 LIGHT+ DALI 840 N HO**  
 ARCHITECTURAL LIGHTING
**90581L600HN0000****Light distribution****PRODUCT DESCRIPTION**

**Application Areas:** Offices, Hotels and residential, Public spaces, Retail, Education, Health and care

**Mounting Type:** Surface mounted

**Control Gear Included:** Yes

**Control Gear:** LED driver 220-240VAC-50/60Hz

**ROFY 85 IP /C D0600 LIGHT+ DALI 840 N HO****CHARACTERISTICS**

**Luminaire Type:** Circular luminaire

**Luminaire Module:** Individual

**Insulation Class:** I

**Ingress Protection (IP):** 54

**Mechanical Impact Protection (IK):** 04

**Ambient Temperature Range (°C):** ]-5, 25[

**Warranty (Years):** 5

**Current Supply Cable Entry Point:** Back

**MATERIALS**

**Body Material:** Steel sheet

**Frame Material:** Extruded aluminium profile

**Finishing:** Epoxy polyester powder coated

**Colour:** Jungle (N)

**Glow-wire Resistance (°C):** 650

**OPTICAL SYSTEM**

**Optical System:** LIGHT+ - Opal diffuser

**Light Distribution:** Direct

**Beam Angle (°):** 106

**TECHNICAL DATA**

**Light Source:** LED

**Input Power (W):** 43

**Input Driver Voltage:** 220-240V-50/60Hz

**Power Factor (λ):** 0,95

**Luminaire Luminous Flux (lm):** 6516

**Luminaire Efficacy (lm/W):** 152

**Unified Glare Rating (UGR):** <22

**LED Lifetime - Rated Median Useful Life:** 80.000h @ L90, B10, Ta 25°C

**CCT - Correlated Colour Temperature (K):** 4000

**Colour Rendering Index (CRI):** >80

**Chromaticity Tolerance (MacAdam step):** <3

**This Product Contains a Light Source of Energy Efficiency Class:** B

**LED Module Forward Voltage Range (VF):** 95,2

**Power Supply Dimming:** DALI 2

**Central Battery Emergency Lighting System (VDC):** 176-280

**Maximum of Luminaires by Magnetic Circuit Breaker B16:** <28

**Inrush Current (A):** <28

**Pulse Duration (μs):** <28

**DIMENSIONS**

**H - Height (mm):** 85

**D - Diameter (mm):** 600