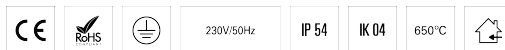


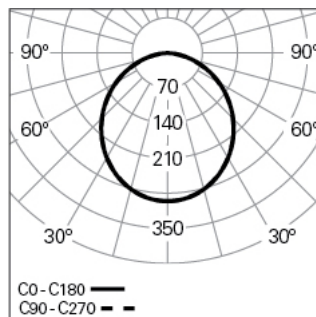
ROFY 85 IP /C D0600 LIGHT+ DALI K3 830 N LO

ARCHITECTURAL LIGHTING

90582L600HN3300



Light distribution



PRODUCT DESCRIPTION

Application Areas: Offices, Hotels and residential, Public spaces, Retail, Education, Health and care

Mounting Type: Surface mounted

Control Gear Included: Yes

Control Gear: LED driver 220-240VAC-50/60Hz

ROFY 85 IP /C D0600 LIGHT+ DALI K3 830 N LO

CHARACTERISTICS

Luminaire Type: Circular luminaire

Luminaire Module: Individual

Insulation Class: I

Ingress Protection (IP): 54

Mechanical Impact Protection (IK): 04

Ambient Temperature Range (°C):]5, 25[

Warranty (Years): 5

Current Supply Cable Entry Point: Back

MATERIALS

Body Material: Steel sheet

Frame Material: Extruded aluminium profile

Finishing: Epoxy polyester powder coated

Colour: Jungle (N)

Glow-wire Resistance (°C): 650

OPTICAL SYSTEM

Optical System: LIGHT+ - Opal diffuser

Light Distribution: Direct

Beam Angle (°): 106

TECHNICAL DATA

Light Source: LED

Input Power (W): 33

Input Driver Voltage: 220-240V-50/60Hz

Power Factor (λ): 0,96

Luminaire Luminous Flux (lm): 4500

Luminaire Efficacy (lm/W): 136

Emergency Unit: 3

Unified Glare Rating (UGR): <22

LED Lifetime - Rated Median Useful Life: 80.000h @ L90, B10, Ta 25°C

CCT - Correlated Colour Temperature (K): 3000

Colour Rendering Index (CRI): >80

Chromaticity Tolerance (MacAdam step): <3

This Product Contains a Light Source of Energy Efficiency Class: B

LED Module Forward Voltage Range (VF): 92,4

Power Supply Dimming: DALI 2

Maximum of Luminaires by Magnetic Circuit Breaker B16: <53

Inrush Current (A): <53

Pulse Duration (µs): <53

DIMENSIONS

H - Height (mm): 85

D - Diameter (mm): 600