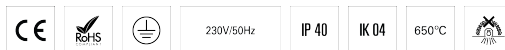


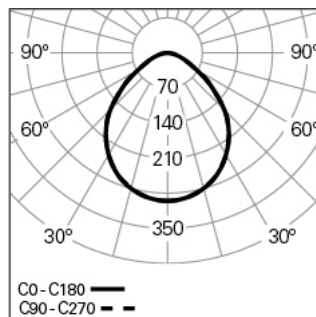
ROFY 60 /T D/I D1150 GCONTROL+ DALI K3 830 0 HO

90591L115H03300

ARCHITECTURAL LIGHTING



Light distribution



PRODUCT DESCRIPTION

Application Areas: Offices, Hotels and residential, Public spaces, Retail, Education, Health and care

Mounting Type: Trimless

Control Gear Included: Yes

Control Gear: LED driver 220-240VAC-50/60Hz

ROFY 60 /T D/I D1150 GCONTROL+ DALI K3 830 0 HO

CHARACTERISTICS

Luminaire Type: Circular luminaire

Luminaire Module: Individual

Insulation Class: I

Ingress Protection (IP): 40

Mechanical Impact Protection (IK): 04

Ambient Temperature Range (°C):]5, 25[

Warranty (Years): 5

Current Supply Cable Entry Point: Back

MATERIALS

Body Material: Aluminium

Frame Material: Extruded aluminium profile

Finishing: Epoxy polyester powder coated

Colour: Sahara (0)

Glow-wire Resistance (°C): 650

OPTICAL SYSTEM

Optical System: gCONTROL+ - Microprismatic diffuser

Light Distribution: Direct / Indirect

Beam Angle (°): 94

Adjustable: Tilt

TECHNICAL DATA

Light Source: LED

Input Power (W): 144

Input Driver Voltage: 220-240V-50/60Hz

Power Factor (λ): 0,97

Luminaire Luminous Flux (lm): 16086

Luminaire Efficacy (lm/W): 112

Emergency Unit: 3

Unified Glare Rating (UGR): <19

LED Lifetime - Rated Median Useful Life: 80.000h @ L90, B10, Ta 25°C

CCT - Correlated Colour Temperature (K): 3000

Colour Rendering Index (CRI): >80

Chromaticity Tolerance (MacAdam step): <3

This Product Contains a Light Source of Energy Efficiency Class: B

LED Module Forward Voltage Range (VF): 199,2 + 123,2

Power Supply Dimming: DALI 2

Maximum of Luminaires by Magnetic Circuit Breaker B16: <12

Inrush Current (A): 37

Pulse Duration (µs): 147

This Product contains a Light Source of Energy Efficiency Class

[Indirect]: C

DIMENSIONS

H - Height (mm): 60

D - Diameter (mm): 1150

D - Recess Dimensions (mm): 1273

H - Recess Height (mm): 135

NOTES

- This product cannot be wall applied.