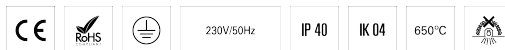


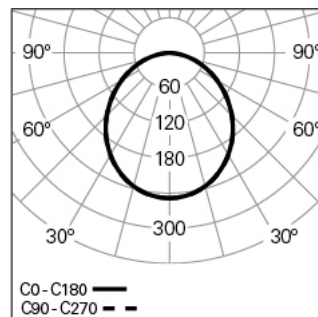
ROFY 60 /T D/I D0400 LIGHT+ HF 830 B HO

ARCHITECTURAL LIGHTING

90593L400EB0300



Light distribution



PRODUCT DESCRIPTION

Application Areas: Offices, Hotels and residential, Public spaces, Retail, Education, Health and care

Mounting Type: Trimless

Control Gear Included: Yes

Control Gear: LED driver 220-240VAC-50/60Hz

ROFY 60 /T D/I D0400 LIGHT+ HF 830 B HO

CHARACTERISTICS

Luminaire Type: Circular luminaire

Luminaire Module: Individual

Insulation Class: I

Ingress Protection (IP): 40

Mechanical Impact Protection (IK): 04

Ambient Temperature Range (°C):]-5, 25[

Warranty (Years): 5

Current Supply Cable Entry Point: Back

MATERIALS

Body Material: Aluminium

Frame Material: Extruded aluminium profile

Finishing: Epoxy polyester powder coated

Colour: Black (B)

Glow-wire Resistance (°C): 650

OPTICAL SYSTEM

Optical System: LIGHT+ - Opal diffuser

Light Distribution: Direct / Indirect

Beam Angle (°): 105

Adjustable: Tilt

TECHNICAL DATA

Light Source: LED

Input Power (W): 32

Input Driver Voltage: 220-240V-50/60Hz

Power Factor (λ): 0,92

Luminaire Luminous Flux (lm): 3680

Luminaire Efficacy (lm/W): 115

Unified Glare Rating (UGR): <22

LED Lifetime - Rated Median Useful Life: 80.000h @ L90, B10, Ta 25°C

CCT - Correlated Colour Temperature (K): 3000

Colour Rendering Index (CRI): >80

Chromaticity Tolerance (MacAdam step): <3

This Product Contains a Light Source of Energy Efficiency Class: C

LED Module Forward Voltage Range (VF): 26,8

Power Supply Dimming: ON/OFF

Central Battery Emergency Lighting System (VDC): 176-280

Maximum of Luminaires by Magnetic Circuit Breaker B16: <25

Inrush Current (A): 8

Pulse Duration (μs): 48

DIMENSIONS

H - Height (mm): 60

D - Diameter (mm): 400

D - Recess Dimensions (mm): 523

H - Recess Height (mm): 119

NOTES

- This product cannot be wall applied.