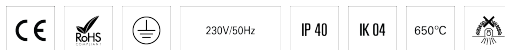


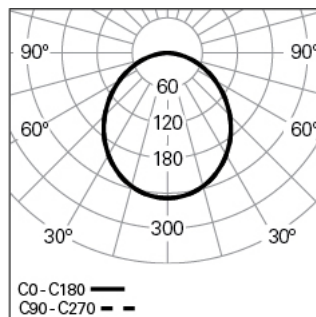
## ROFY 60 /T D/I D0900 LIGHT+ HF 840 G LO

ARCHITECTURAL LIGHTING

90594L900EG0000



### Light distribution



### PRODUCT DESCRIPTION

**Application Areas:** Offices, Hotels and residential, Public spaces, Retail, Education, Health and care

**Mounting Type:** Trimless

**Control Gear Included:** Yes

**Control Gear:** LED driver 220-240VAC-50/60Hz

### ROFY 60 /T D/I D0900 LIGHT+ HF 840 G LO

#### CHARACTERISTICS

**Luminaire Type:** Circular luminaire

**Luminaire Module:** Individual

**Insulation Class:** I

**Ingress Protection (IP):** 40

**Mechanical Impact Protection (IK):** 04

**Ambient Temperature Range (°C):** ]-5, 25[

**Warranty (Years):** 5

**Current Supply Cable Entry Point:** Back

#### MATERIALS

**Body Material:** Aluminium

**Frame Material:** Extruded aluminium profile

**Finishing:** Epoxy polyester powder coated

**Colour:** Grey (G)

**Glow-wire Resistance (°C):** 650

#### OPTICAL SYSTEM

**Optical System:** LIGHT+ - Opal diffuser

**Light Distribution:** Direct / Indirect

**Beam Angle (°):** 104

**Adjustable:** Tilt

### TECHNICAL DATA

**Light Source:** LED

**Input Power (W):** 68

**Input Driver Voltage:** 220-240V-50/60Hz

**Power Factor (λ):** 0,95

**Luminaire Luminous Flux (lm):** 9253

**Luminaire Efficacy (lm/W):** 136

**Unified Glare Rating (UGR):** <22

**LED Lifetime - Rated Median Useful Life:** 80.000h @ L90, B10, Ta 25°C

**CCT - Correlated Colour Temperature (K):** 4000

**Colour Rendering Index (CRI):** >80

**Chromaticity Tolerance (MacAdam step):** <3

**This Product Contains a Light Source of Energy Efficiency Class:** B

**LED Module Forward Voltage Range (VF):** 191,6

**Power Supply Dimming:** ON/OFF

**Central Battery Emergency Lighting System (VDC):** 176-280

**Maximum of Luminaires by Magnetic Circuit Breaker B16:** <18

**Inrush Current (A):** 40

**Pulse Duration (μs):** 173

**This Product contains a Light Source of Energy Efficiency Class**

**[Indirect]:** C

#### DIMENSIONS

**H - Height (mm):** 60

**D - Diameter (mm):** 900

**D - Recess Dimensions (mm):** 1023

**H - Recess Height (mm):** 135

#### NOTES

- This product cannot be wall applied.