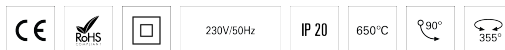


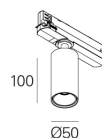
ELI 50 SPOT TRACK L100 PB HF 940 W 50° HO

ARCHITECTURAL LIGHTING

90698L100EW0050



Light distribution



L=170.5mm

PRODUCT DESCRIPTION

Application Areas: Offices, Hotels and residential, Public spaces, Retail, Education, Health and care

Mounting Type: Track and Spotlights

Control Gear Included: Yes

Control Gear: LED driver 220-240VAC-50/60Hz

Input Driver Voltage: 220-240V-50/60Hz

Power Factor (λ): 0,94

Luminaire Luminous Flux (lm): 1144

Luminaire Efficacy (lm/W): 104

Unified Glare Rating (UGR): <22

LED Lifetime - Rated Median Useful Life: 60.000h @ L80, B10, Ta 25°C

CCT - Correlated Colour Temperature (K): 4000

Colour Rendering Index (CRI): >90

Chromaticity Tolerance (MacAdam step): <3

This Product Contains a Light Source of Energy Efficiency Class: D

LED Module Forward Voltage Range (VF): 34,9

Power Supply Dimming: ON/OFF

Maximum of Luminaires by Magnetic Circuit Breaker B16: <50

Inrush Current (A): 16

Pulse Duration (μ s): 200

ELI 50 SPOT TRACK L100 PB HF 940 W 50° HO

CHARACTERISTICS

Luminaire Type: Round downlight

Insulation Class: II

Ingress Protection (IP): 20

Ambient Temperature Range (°C):]-5, 25[

Warranty (Years): 5

MATERIALS

Body Material: Extruded aluminium profile

Finishing: Epoxy polyester powder coated

Colour: White (W)

Glow-wire Resistance (°C): 850

OPTICAL SYSTEM

Optical System: PB - Shiny reflector

Light Distribution: Direct

Beam Angle (°): 50°

Adjustable: Tilt / Rotation

TECHNICAL DATA

Light Source: LED

Input Power (W): 11

DIMENSIONS

L - Length (mm): 170.5

W - Width (mm): 50

H - Height (mm): 169

D - Diameter (mm): 50