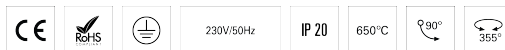
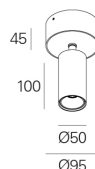


**ELI 50 SPOT /C L100 PB HF 940 W 20° HO**

ARCHITECTURAL LIGHTING

**90700L100EW0020****Light distribution****PRODUCT DESCRIPTION**

**Application Areas:** Offices, Hotels and residential, Public spaces, Retail, Education, Health and care

**Mounting Type:** Surface mounted

**Control Gear Included:** Yes

**Control Gear:** LED driver 220-240VAC-50/60Hz

**ELI 50 SPOT /C L100 PB HF 940 W 20° HO****CHARACTERISTICS**

**Luminaire Type:** Round downlight

**Insulation Class:** I

**Ingress Protection (IP):** 20

**Ambient Temperature Range (°C):** ]-5, 25[

**Warranty (Years):** 5

**Current Supply Cable Entry Point:** Back

**MATERIALS**

**Body Material:** Extruded aluminium profile

**Finishing:** Epoxy polyester powder coated

**Colour:** White (W)

**Glow-wire Resistance (°C):** 850

**OPTICAL SYSTEM**

**Optical System:** PB - Shiny reflector

**Light Distribution:** Direct

**Beam Angle (°):** 20°

**Adjustable:** Tilt / Rotation

**TECHNICAL DATA**

**Light Source:** LED

**Input Power (W):** 11

**Input Driver Voltage:** 220-240V-50/60Hz

**Power Factor (λ):** 0,94

**Luminaire Luminous Flux (lm):** 1168

**Luminaire Efficacy (lm/W):** 106

**Unified Glare Rating (UGR):** <22

**LED Lifetime - Rated Median Useful Life:** 60.000h @ L80, B10, Ta 25°C

**CCT - Correlated Colour Temperature (K):** 4000

**Colour Rendering Index (CRI):** >90

**Chromaticity Tolerance (MacAdam step):** <3

**This Product Contains a Light Source of Energy Efficiency Class:** D

**LED Module Forward Voltage Range (VF):** 34,9

**Power Supply Dimming:** ON/OFF

**Maximum of Luminaires by Magnetic Circuit Breaker B16:** <92

**Inrush Current (A):** 4,7

**Pulse Duration (µs):** 30

**DIMENSIONS**

**H - Height (mm):** 171

**D - Diameter (mm):** 95