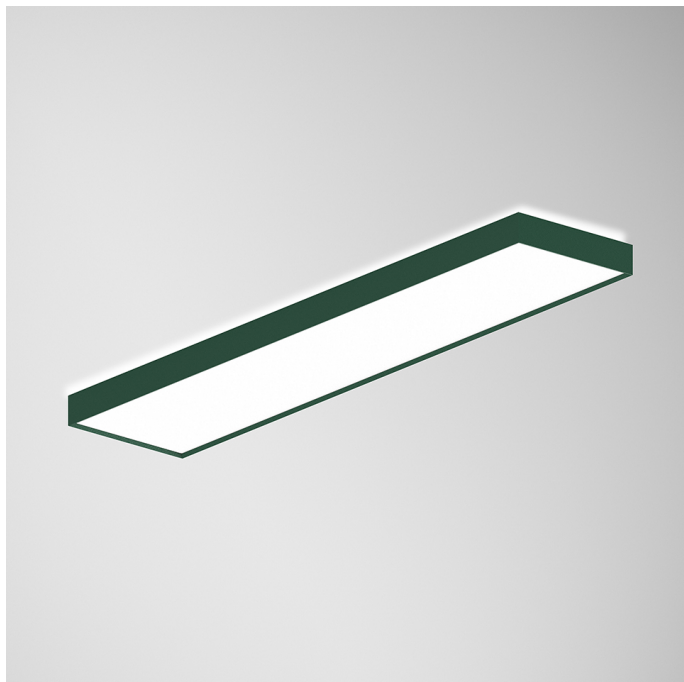
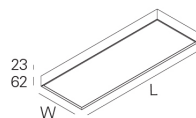
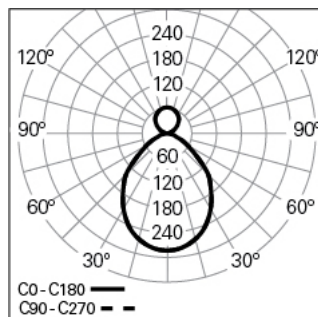


**ROFY 60 SQ D/I L1342W286 GCONTROL+ HF 840 N LO**

ARCHITECTURAL LIGHTING

**90715L132EN0000****Light distribution**

L=1342mm

**PRODUCT DESCRIPTION**

**Application Areas:** Offices, Hotels and residential, Public spaces, Retail, Education, Health and care

**Mounting Type:** Surface mounted, Suspended, Wall mounted

**Control Gear Included:** Yes

**Control Gear:** LED driver 220-240VAC-50/60Hz

**ROFY 60 SQ D/I L1342W286 GCONTROL+ HF 840 N LO****CHARACTERISTICS**

**Luminaire Type:** Rectangular luminaire

**Luminaire Module:** Individual

**Insulation Class:** I

**Ingress Protection (IP):** 40

**Mechanical Impact Protection (IK):** 04

**Ambient Temperature Range (°C):** ]-5, 25[

**Warranty (Years):** 5

**Current Supply Cable Entry Point:** Back

**MATERIALS**

**Body Material:** Aluminium

**Frame Material:** Extruded aluminium profile

**Finishing:** Epoxy polyester powder coated

**Colour:** Jungle (N)

**Glow-wire Resistance (°C):** 650

**OPTICAL SYSTEM**

**Optical System:** gCONTROL+ - Microprismatic diffuser

**Light Distribution:** Direct / Indirect

**Beam Angle (°):** 89

**TECHNICAL DATA**

**Light Source:** LED

**Input Power (W):** 55

**Input Driver Voltage:** 220-240V-50/60Hz

**Power Factor (λ):** 0,94

**Luminaire Luminous Flux (lm):** 7184

**Luminaire Efficacy (lm/W):** 131

**Unified Glare Rating (UGR):** <16

**LED Lifetime - Rated Median Useful Life:** 80.000h @ L90, B10, Ta 25°C

**CCT - Correlated Colour Temperature (K):** 4000

**Colour Rendering Index (CRI):** >80

**Chromaticity Tolerance (MacAdam step):** <3

**This Product Contains a Light Source of Energy Efficiency Class:** B

**LED Module Forward Voltage Range (VF):** 142

**Power Supply Dimming:** ON/OFF

**Central Battery Emergency Lighting System (VDC):** 176-280

**Maximum of Luminaires by Magnetic Circuit Breaker B16:** <34

**Inrush Current (A):** 23

**Pulse Duration (μs):** 176

**This Product contains a Light Source of Energy Efficiency Class**

**[Indirect]:** C

**DIMENSIONS**

**L - Length (mm):** 1342

**W - Width (mm):** 286

**H - Height (mm):** 85

**NOTES**

- For suspended version it is necessary to order the suspension, the current supply cable and the ceiling rose. Please order separately;
- In order to guarantee total light uniformity on the ceiling in the suspended version, installation must be carried out at a minimum distance of 500 mm.