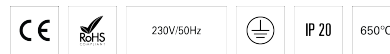


CORA L15W30 2 BOPTICS HF 830 W LO

TECHNICAL LIGHTING

90724L215EW0300



Light distribution



L=1497mm

PRODUCT DESCRIPTION

Application Areas: Offices, Education, Health and care
Mounting Type: Suspended
Control Gear Included: Yes
Control Gear: LED driver 220-240VAC-50/60Hz

CORA L15W30 2 BOPTICS HF 830 W LO

CHARACTERISTICS

Luminaire Type: Rectangular luminaire
Luminaire Module: Individual
Insulation Class: I
Ingress Protection (IP): 20
Ambient Temperature Range (°C):]-5, 25[
Warranty (Years): 5
Current Supply Cable Entry Point: Back

MATERIALS

Body Material: Steel sheet
Finishing: Epoxy polyester powder coated
Colour: White (W)
Glow-wire Resistance (°C): 650

OPTICAL SYSTEM

Optical System: bOPTICS - Symmetric reflector
Light Distribution: Direct
Beam Angle (°): 44

TECHNICAL DATA

Light Source: LED
Input Power (W): 33

Input Driver Voltage: 220-240V-50/60Hz
Power Factor (λ): 0,94
Luminaire Luminous Flux (lm): 4500
Luminaire Efficacy (lm/W): 136
Unified Glare Rating (UGR): <10
LED Lifetime - Rated Median Useful Life: 80.000h @ L90, B10, Ta 25°C
CCT - Correlated Colour Temperature (K): 3000
Colour Rendering Index (CRI): >80
Chromaticity Tolerance (MacAdam step): <3
This Product Contains a Light Source of Energy Efficiency Class: C
LED Module Forward Voltage Range (VF): 32,6
Power Supply Dimming: ON/OFF
Central Battery Emergency Lighting System (VDC): 176-280
Maximum of Luminaires by Magnetic Circuit Breaker B16: <25
Inrush Current (A): 24
Pulse Duration (μs): 194

DIMENSIONS

L - Length (mm): 1497
W - Width (mm): 297
H - Height (mm): 30
Net Weight (kg): 6.7

NOTES

• To complete the product it is necessary to order the suspension, the current supply cable and ceiling rose. Please order separately.