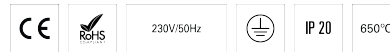


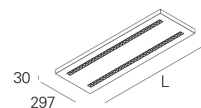
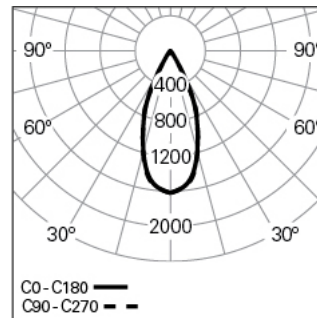
# CORA L15W30 2 BOPTICS DALI 840 W LO

TECHNICAL LIGHTING

90724L215HW0000



## Light distribution



L=1497mm

## PRODUCT DESCRIPTION

**Application Areas:** Offices, Education, Health and care  
**Mounting Type:** Suspended  
**Control Gear Included:** Yes  
**Control Gear:** LED driver 220-240VAC-50/60Hz

## CORA L15W30 2 BOPTICS DALI 840 W LO

### CHARACTERISTICS

**Luminaire Type:** Rectangular luminaire  
**Luminaire Module:** Individual  
**Insulation Class:** I  
**Ingress Protection (IP):** 20  
**Ambient Temperature Range (°C):** ]-5, 25[  
**Warranty (Years):** 5  
**Current Supply Cable Entry Point:** Back

### MATERIALS

**Body Material:** Steel sheet  
**Finishing:** Epoxy polyester powder coated  
**Colour:** White (W)  
**Glow-wire Resistance (°C):** 650

### OPTICAL SYSTEM

**Optical System:** bOPTICS - Symmetric reflector  
**Light Distribution:** Direct  
**Beam Angle (°):** 44

### TECHNICAL DATA

**Light Source:** LED  
**Input Power (W):** 36

**Input Driver Voltage:** 220-240V-50/60Hz

**Power Factor (λ):** 0,96

**Luminaire Luminous Flux (lm):** 4709

**Luminaire Efficacy (lm/W):** 131

**Unified Glare Rating (UGR):** <10

**LED Lifetime - Rated Median Useful Life:** 80.000h @ L90, B10, Ta 25°C

**CCT - Correlated Colour Temperature (K):** 4000

**Colour Rendering Index (CRI):** >80

**Chromaticity Tolerance (MacAdam step):** <3

**LED Module Forward Voltage Range (VF):** 32,6

**Power Supply Dimming:** DALI 2

**Central Battery Emergency Lighting System (VDC):** 176-280

**Maximum of Luminaires by Magnetic Circuit Breaker B16:** <34

**Inrush Current (A):** 18

**Pulse Duration (µs):** 180

### DIMENSIONS

**L - Length (mm):** 1497

**W - Width (mm):** 297

**H - Height (mm):** 30

**Net Weight (kg):** 6.7

### NOTES

- To complete the product it is necessary to order the suspension, the current supply cable and ceiling rose. Please order separately.