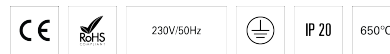


CORA L15W30 2 BOPTICS DALI K3 840 W HO

TECHNICAL LIGHTING

90727L215HW3000



Light distribution



L=1497mm

PRODUCT DESCRIPTION

Application Areas: Offices, Education, Health and care
Mounting Type: Suspended
Control Gear Included: Yes
Control Gear: LED driver 220-240VAC-50/60Hz

CORA L15W30 2 BOPTICS DALI K3 840 W HO

CHARACTERISTICS

Luminaire Type: Rectangular luminaire
Luminaire Module: Individual
Insulation Class: I
Ingress Protection (IP): 20
Ambient Temperature Range (°C):]5, 25[
Warranty (Years): 5
Current Supply Cable Entry Point: Back

MATERIALS

Body Material: Steel sheet
Finishing: Epoxy polyester powder coated
Colour: White (W)
Glow-wire Resistance (°C): 650

OPTICAL SYSTEM

Optical System: bOPTICS - Symmetric reflector
Light Distribution: Direct
Beam Angle (°): 44

TECHNICAL DATA

Light Source: LED
Input Power (W): 55

Input Driver Voltage: 220-240V-50/60Hz

Power Factor (λ): 0,98

Luminaire Luminous Flux (lm): 6816

Luminaire Efficacy (lm/W): 124

Emergency Unit: 3

Unified Glare Rating (UGR): <10

LED Lifetime - Rated Median Useful Life: 80.000h @ L90, B10, Ta 25°C

CCT - Correlated Colour Temperature (K): 4000

Colour Rendering Index (CRI): >80

Chromaticity Tolerance (MacAdam step): <3

This Product Contains a Light Source of Energy Efficiency Class: B

LED Module Forward Voltage Range (VF): 33,7

Power Supply Dimming: DALI 2

Maximum of Luminaires by Magnetic Circuit Breaker B16: <34

Inrush Current (A): 18

Pulse Duration (µs): 180

DIMENSIONS

L - Length (mm): 1497

W - Width (mm): 297

H - Height (mm): 30

Net Weight (kg): 7

NOTES

• To complete the product it is necessary to order the suspension, the current supply cable and ceiling rose. Please order separately.