

DYNA /C

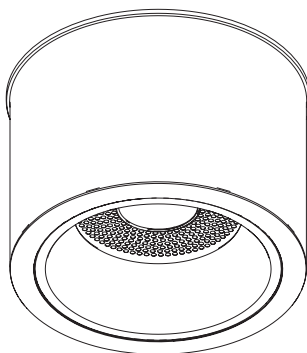
EN INSTALLATION INSTRUCTIONS

FR NOTICE DE MONTAGE

DE MONTAGEANLEITUNG

PT INSTRUÇÕES DE MONTAGEM

ES INSTRUCCIONES DE MONTAJE



Order code / Code com. / Bestell-Nr. / Código / Código: 90759L...



EN Carefully read the installation instructions provided before installing the device. Safety and Maintenance: Scan here.

FR Lire attentivement les notices de montage avant l'installation de l'appareil. Sécurité et Entretien: Sancez ici.

DE Bitte lesen die mitgelieferte Montageanleitungen vor de Montage des Geräts. Sicherheit und Wartung: Hier scannen.

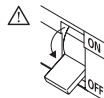
PT Leia atentamente as instruções de montagem fornecidas antes de instalar o aparelho. Segurança e Manutenção: Scan aqui.

ES Lea atentamente las instrucciones de montaje proporcionadas antes de instalar el aparato. Seguridad y Mantenimiento: Escanea aquí.

INDELAGUE - INDÚSTRIA ELÉTRICA DE ÁGUEDA, S.A. | RUA DA MINA 465, COVÃO - ZONA INDUSTRIAL EN1 NORTE
3750-792 ÁGUEDA, PORTUGAL | T. +351 234 612 310 | WWW.INDELAGUEGROUP.COM

DYNA /C

 (mm)
Ø242x170



TOOLS | OUTILS | WERKZEUG | FERRAMENTAS | HERRAMIENTAS

Phillips screwdriver



EN USE GLOVES.
FR UTILISEZ DES GANTS.
DE HANDSCHUHE BENUTZEN.
PT UTILIZE LUVAS.
ES USE GUANTES.

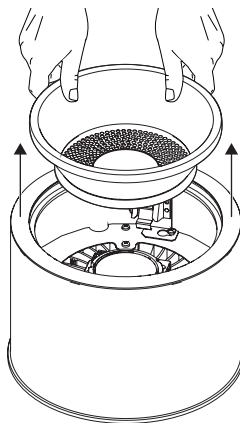


DYNA /C

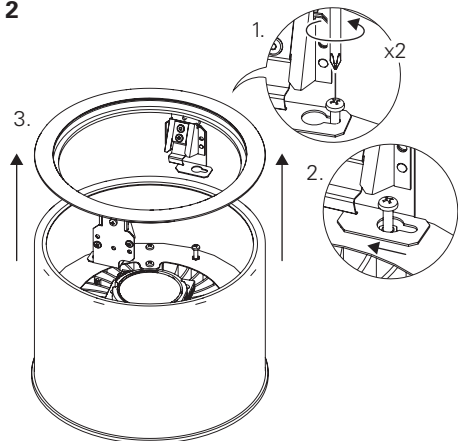


(x1)

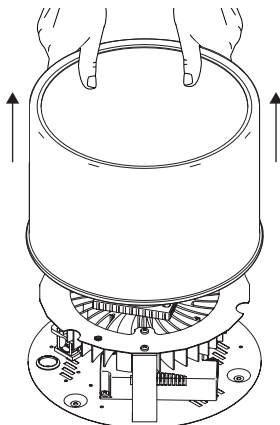
1



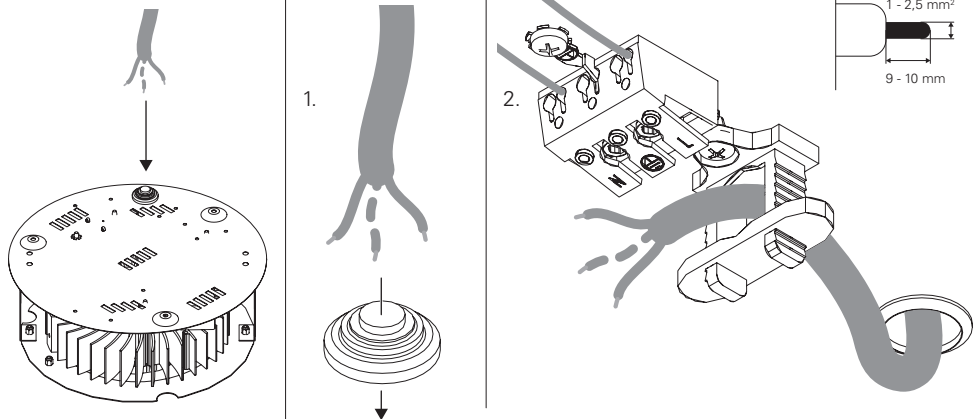
2



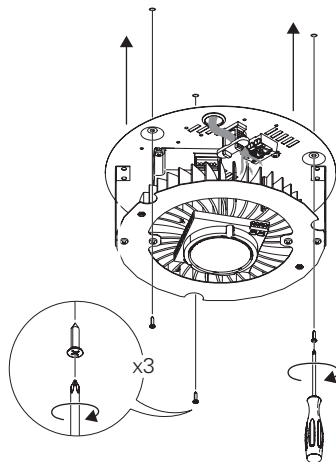
3



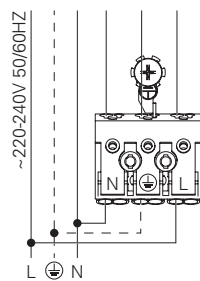
4



5



6 - HF



DALI

