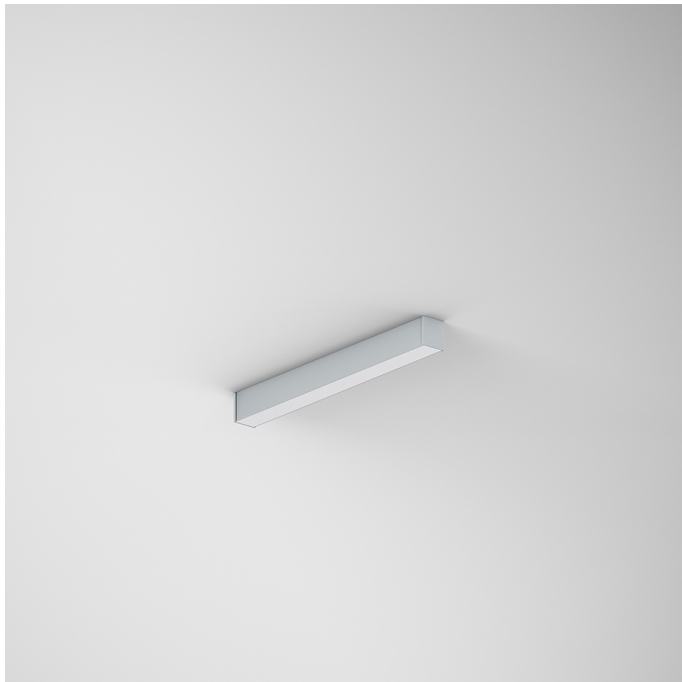


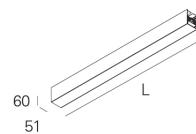
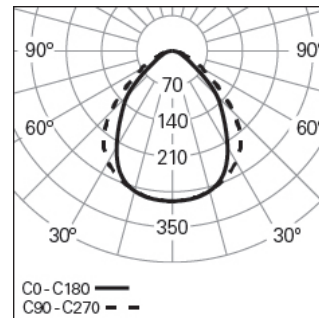
## REBA 50 LITE /C LINE L0600 BGLARE HF 830 G

### ALUMINIUM PROFILE SYSTEMS

90883L006EG0300



#### Light distribution



L=562mm

#### PRODUCT DESCRIPTION

**Application Areas:** Offices, Hotels and residential, Public spaces, Retail, Education, Health and care

**Mounting Type:** Surface mounted

**Control Gear Included:** Yes

**Control Gear:** LED driver 220-240VAC-50/60Hz

#### REBA 50 LITE /C LINE L0600 BGLARE HF 830 G

#### CHARACTERISTICS

**Luminaire Type:** Straight line luminaire

**Luminaire Module:** Middle (MID)

**Insulation Class:** I

**Ingress Protection (IP):** 40

**Ambient Temperature Range (°C):** ]-5, 25[

**Warranty (Years):** 5

**Current Supply Cable Entry Point:** Back

#### MATERIALS

**Body Material:** Extruded aluminium profile

**Finishing:** Epoxy polyester powder coated

**Colour:** Grey (G)

**Glow-wire Resistance (°C):** 850

#### OPTICAL SYSTEM

**Optical System:** bGLARE - Microprismatic diffuser

**Light Distribution:** Direct

**Beam Angle (°):** 85

#### TECHNICAL DATA

**Light Source:** LED

**Input Power (W):** 8

**Input Driver Voltage:** 220-240V-50/60Hz

**Power Factor (λ):** 0,89

**Luminaire Luminous Flux (lm):** 756

**Luminaire Efficacy (lm/W):** 95

**Unified Glare Rating (UGR):** <19

**LED Lifetime - Rated Median Useful Life:** 80.000h @ L80, B10, Ta 25°C

**CCT - Correlated Colour Temperature (K):** 3000

**Photobiological safety according to IEC 62471:** Risk group 1 - Low-risk (RG1)

**Colour Rendering Index (CRI):** >80

**Chromaticity Tolerance (MacAdam step):** <3

**This Product Contains a Light Source of Energy Efficiency Class:** D

**LED Module Forward Voltage Range (VF):** 33,7

**Power Supply Dimming:** ON/OFF

**Central Battery Emergency Lighting System (VDC):** 176-280

**Maximum of Luminaires by Magnetic Circuit Breaker B16:** <45

**Inrush Current (A):** 18

**Pulse Duration (µs):** 160

#### DIMENSIONS

**L - Length (mm):** 562

**W - Width (mm):** 51

**H - Height (mm):** 60

**Net Weight (kg):** 1.2

#### NOTES

- To complete the line, it is necessary to order the start kit separately;
- Dimensions do not include start kit. To complete the line add 6 mm to the length.