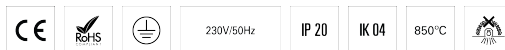
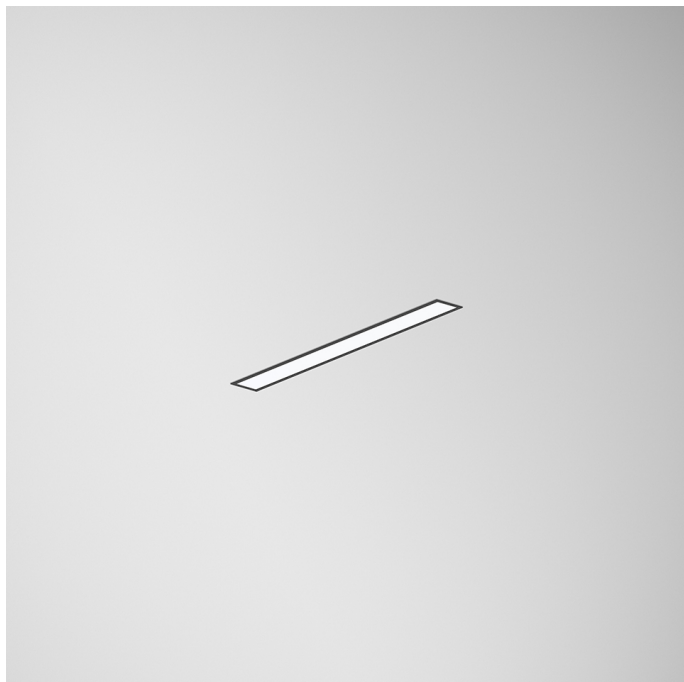


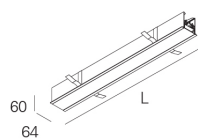
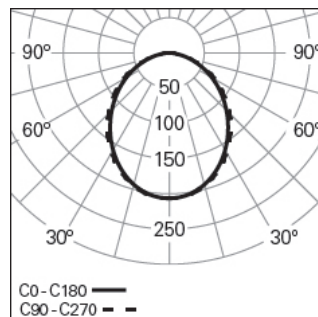
## REBA 50 LITE /E LINE L0600 BLINE DALI 840 B

ALUMINIUM PROFILE SYSTEMS

90901L006HB0000



### Light distribution



L=562mm

### PRODUCT DESCRIPTION

**Application Areas:** Offices, Hotels and residential, Public spaces, Retail, Education, Health and care

**Mounting Type:** Recessed

**Control Gear Included:** Yes

**Control Gear:** LED driver 220-240VAC-50/60Hz

## REBA 50 LITE /E LINE L0600 BLINE DALI 840 B

### CHARACTERISTICS

**Luminaire Type:** Straight line luminaire

**Luminaire Module:** Middle (MID)

**Insulation Class:** I

**Ingress Protection (IP):** 20

**Ambient Temperature Range (°C):** ]-5, 25[

**Ceiling Thickness (mm):** 13-25

**Warranty (Years):** 5

**Current Supply Cable Entry Point:** Back

### MATERIALS

**Body Material:** Extruded aluminium profile

**Finishing:** Epoxy polyester powder coated

**Colour:** Black (B)

**Glow-wire Resistance (°C):** 960

### OPTICAL SYSTEM

**Optical System:** bLINE - Opal diffuser

**Light Distribution:** Direct

**Beam Angle (°):** 85

### TECHNICAL DATA

**Light Source:** LED

**Input Power (W):** 12

**Input Driver Voltage:** 220-240V-50/60Hz

**Power Factor (λ):** 0,86

**Luminaire Luminous Flux (lm):** 989

**Luminaire Efficacy (lm/W):** 82

**Unified Glare Rating (UGR):** <22

**LED Lifetime - Rated Median Useful Life:** 80.000h @ L80, B10, Ta 25°C

**CCT - Correlated Colour Temperature (K):** 4000

**Photobiological safety according to IEC 62471:** Risk group 1 - Low-risk (RG1)

**Colour Rendering Index (CRI):** >80

**Chromaticity Tolerance (MacAdam step):** <3

**This Product Contains a Light Source of Energy Efficiency Class:** D

**LED Module Forward Voltage Range (VF):** 33,7

**Power Supply Dimming:** DALI 2

**Central Battery Emergency Lighting System (VDC):** 180-280

**Maximum of Luminaires by Magnetic Circuit Breaker B16:** <25

**Inrush Current (A):** 18

**Pulse Duration (µs):** 15

### DIMENSIONS

**L - Length (mm):** 562

**W - Width (mm):** 64

**H - Height (mm):** 60

**D - Recess Dimensions (mm):** 562x55-57

**H - Recess Height (mm):** 60

**Net Weight (kg):** 1.2