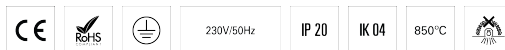
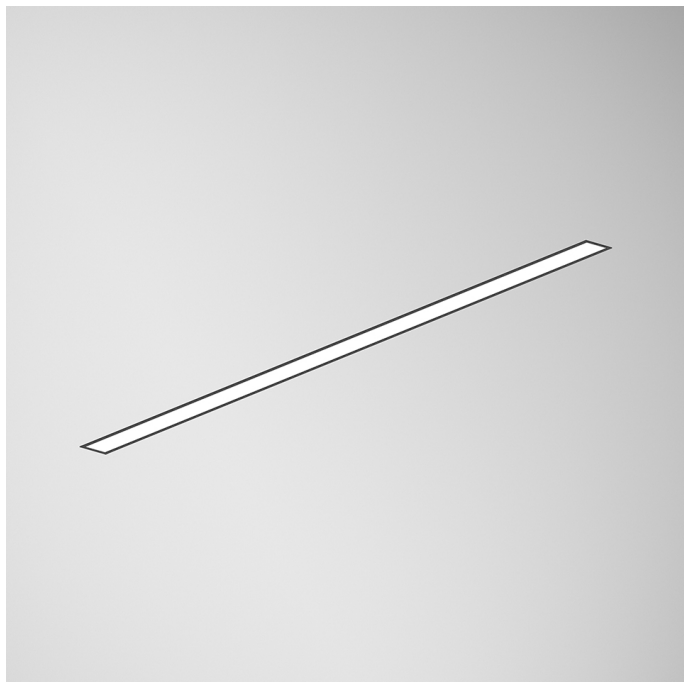


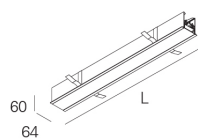
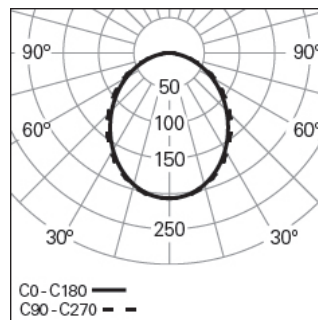
REBA 50 LITE /E LINE L1500 BLINE DALI 840 B

ALUMINIUM PROFILE SYSTEMS

90901L015HB0000



Light distribution



L=1402mm

PRODUCT DESCRIPTION

Application Areas: Offices, Hotels and residential, Public spaces, Retail, Education, Health and care

Mounting Type: Recessed

Control Gear Included: Yes

Control Gear: LED driver 220-240VAC-50/60Hz

REBA 50 LITE /E LINE L1500 BLINE DALI 840 B

CHARACTERISTICS

Luminaire Type: Straight line luminaire

Luminaire Module: Middle (MID)

Insulation Class: I

Ingress Protection (IP): 20

Ambient Temperature Range (°C):]-5, 25[

Ceiling Thickness (mm): 13-25

Warranty (Years): 5

Current Supply Cable Entry Point: Back

MATERIALS

Body Material: Extruded aluminium profile

Finishing: Epoxy polyester powder coated

Colour: Black (B)

Glow-wire Resistance (°C): 960

OPTICAL SYSTEM

Optical System: bLINE - Opal diffuser

Light Distribution: Direct

Beam Angle (°): 85

TECHNICAL DATA

Light Source: LED

Input Power (W): 28

Input Driver Voltage: 220-240V-50/60Hz

Power Factor (λ): 0,9

Luminaire Luminous Flux (lm): 2474

Luminaire Efficacy (lm/W): 88

Unified Glare Rating (UGR): <25

LED Lifetime - Rated Median Useful Life: 80.000h @ L80, B10, Ta 25°C

CCT - Correlated Colour Temperature (K): 4000

Photobiological safety according to IEC 62471: Risk group 1 - Low-risk (RG1)

Colour Rendering Index (CRI): >80

Chromaticity Tolerance (MacAdam step): <3

This Product Contains a Light Source of Energy Efficiency Class: D

LED Module Forward Voltage Range (VF): 84,7

Power Supply Dimming: DALI 2

Central Battery Emergency Lighting System (VDC): 180-280

Maximum of Luminaires by Magnetic Circuit Breaker B16: <55

Inrush Current (A): 8

Pulse Duration (µs): 51

DIMENSIONS

L - Length (mm): 1402

W - Width (mm): 64

H - Height (mm): 60

D - Recess Dimensions (mm): 1402x55-57

H - Recess Height (mm): 60

Net Weight (kg): 2.6