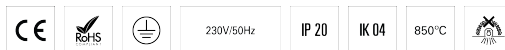
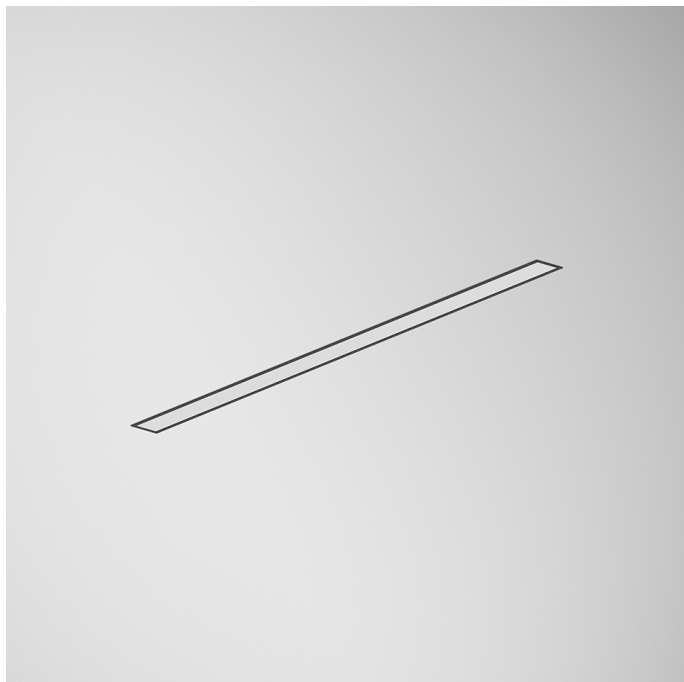
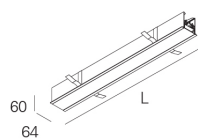
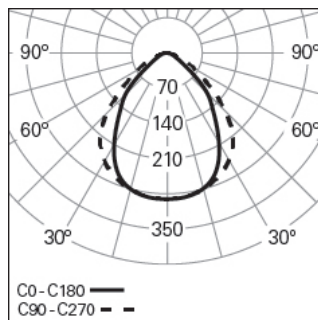


REBA 50 LITE /E LINE L1200 BGLARE DALI 840 B

ALUMINIUM PROFILE SYSTEMS

90902L012HB0000**Light distribution**

L=1122mm

PRODUCT DESCRIPTION

Application Areas: Offices, Hotels and residential, Public spaces, Retail, Education, Health and care

Mounting Type: Recessed

Control Gear Included: Yes

Control Gear: LED driver 220-240VAC-50/60Hz

REBA 50 LITE /E LINE L1200 BGLARE DALI 840 B**CHARACTERISTICS**

Luminaire Type: Straight line luminaire

Luminaire Module: Middle (MID)

Insulation Class: I

Ingress Protection (IP): 20

Ambient Temperature Range (°C):]-5, 25[

Ceiling Thickness (mm): 13-25

Warranty (Years): 5

Current Supply Cable Entry Point: Back

MATERIALS

Body Material: Extruded aluminium profile

Finishing: Epoxy polyester powder coated

Colour: Black (B)

Glow-wire Resistance (°C): 850

OPTICAL SYSTEM

Optical System: bGLARE - Microprismatic diffuser

Light Distribution: Direct

Beam Angle (°): 85

TECHNICAL DATA

Light Source: LED

Input Power (W): 15

Input Driver Voltage: 220-240V-50/60Hz

Power Factor (λ): 0,89

Luminaire Luminous Flux (lm): 1505

Luminaire Efficacy (lm/W): 100

Unified Glare Rating (UGR): <19

LED Lifetime - Rated Median Useful Life: 80.000h @ L80, B10, Ta 25°C

CCT - Correlated Colour Temperature (K): 4000

Photobiological safety according to IEC 62471: Risk group 1 - Low-risk (RG1)

Colour Rendering Index (CRI): >80

Chromaticity Tolerance (MacAdam step): <3

This Product Contains a Light Source of Energy Efficiency Class: D

LED Module Forward Voltage Range (VF): 67,7

Power Supply Dimming: DALI 2

Central Battery Emergency Lighting System (VDC): 180-280

Maximum of Luminaires by Magnetic Circuit Breaker B16: <55

Inrush Current (A): 8

Pulse Duration (µs): 51

DIMENSIONS

L - Length (mm): 1122

W - Width (mm): 64

H - Height (mm): 60

D - Recess Dimensions (mm): 1122x55-57

H - Recess Height (mm): 60

Net Weight (kg): 2.1