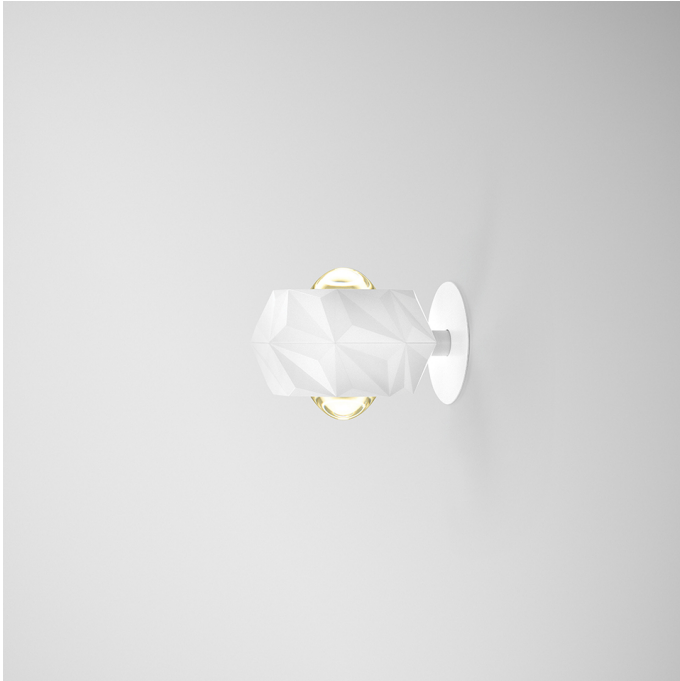
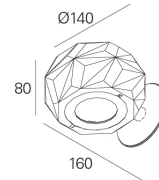
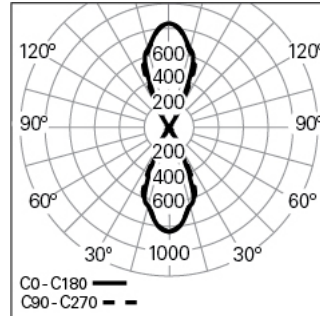


6TH ELEMENT /W D/I D140 930 W 50°/50°
ARCHITECTURAL LIGHTING

90279L0160W0B50



Light distribution



L=175mm

PRODUCT DESCRIPTION

Application Areas: Offices, Hotels and residential, Public spaces, Retail, Education, Health and care
Mounting Type: Wall mounted
Control Gear Included: No

6TH ELEMENT /W D/I D140 930 W 50°/50°

CHARACTERISTICS

Luminaire Type: Round downlight
Luminaire Module: Individual
Insulation Class: III
Ingress Protection (IP): 40
Ambient Temperature Range (°C):]-5, 25[
Warranty (Years): 5
Current Supply Cable Entry Point: Back

MATERIALS

Body Material: Die-cast aluminium
Finishing: Epoxy polyester powder coated
Colour: White (W)
Glow-wire Resistance (°C): 650

OPTICAL SYSTEM

Optical System: Lens
Light Distribution: Direct / Indirect
Beam Angle (°): 51/51
Adjustable: Rotation

TECHNICAL DATA

Light Source: LED

Input Power (W): 17
Power Factor (λ): 1
Luminaire Luminous Flux (lm): 2129
Luminaire Efficacy (lm/W): 125
Unified Glare Rating (UGR): <16
LED Lifetime - Rated Median Useful Life: 50.000h @ L80, B10, Ta 25°C
CCT - Correlated Colour Temperature (K): 3000
Colour Rendering Index (CRI): >90
Chromaticity Tolerance (MacAdam step): <3
This Product Contains a Light Source of Energy Efficiency Class: E
LED Module Forward Voltage Range (VF): 34,4
Input luminaire current (mA): 500

DIMENSIONS

L - Length (mm): 175
W - Width (mm): 140
H - Height (mm): 80

NOTES

• To complete the product it is necessary to order the ceiling rose separately.