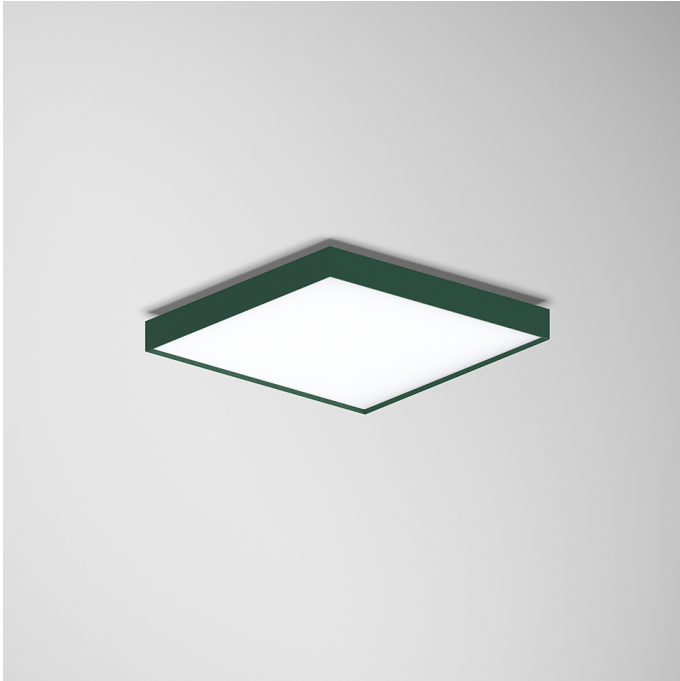
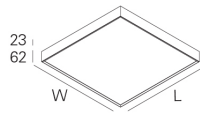
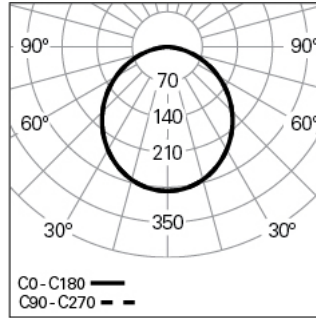


ROFY 60 SQ L0550W550 LIGHT+ DALI 840 N LO
ARCHITECTURAL LIGHTING

90721L550HN0000



Light distribution



L=550mm

PRODUCT DESCRIPTION

Application Areas: Offices, Hotels and residential, Public spaces, Retail, Education, Health and care
Mounting Type: Surface mounted, Suspended, Wall mounted
Control Gear Included: Yes
Control Gear: LED driver 220-240VAC-50/60Hz

ROFY 60 SQ L0550W550 LIGHT+ DALI 840 N LO

CHARACTERISTICS

Luminaire Type: Square luminaire
Luminaire Module: Individual
Insulation Class: I
Ingress Protection (IP): 40
Mechanical Impact Protection (IK): 4
Ambient Temperature Range (°C):]-5, 25[
Warranty (Years): 5
Current Supply Cable Entry Point: Back

MATERIALS

Body Material: Aluminium
Frame Material: Extruded aluminium profile
Finishing: Epoxy polyester powder coated
Colour: Jungle (N)
Glow-wire Resistance (°C): 650

OPTICAL SYSTEM

Optical System: LIGHT+ - Opal diffuser
Light Distribution: Direct
Beam Angle (°): 108

TECHNICAL DATA

Light Source: LED
Input Power (W): 33
Input Driver Voltage: 220-240V-50/60Hz
Power Factor (λ): 0,95
Luminaire Luminous Flux (lm): 4568
Luminaire Efficacy (lm/W): 138
Unified Glare Rating (UGR): <22
LED Lifetime - Rated Median Useful Life: 80.000h @ L90, B10, Ta 25°C
CCT - Correlated Colour Temperature (K): 4000
Colour Rendering Index (CRI): >80
Chromaticity Tolerance (MacAdam step): <3
This Product Contains a Light Source of Energy Efficiency Class: B
LED Module Forward Voltage Range (VF): 113,6
Power Supply Dimming: DALI 2
Central Battery Emergency Lighting System (VDC): 176-280
Maximum of Luminaires by Magnetic Circuit Breaker B16: <53
Inrush Current (A): 20
Pulse Duration (µs): 139

DIMENSIONS

L - Length (mm): 550
W - Width (mm): 550
H - Height (mm): 85

NOTES

• For suspended version it is necessary to order the suspension, the current supply cable and the ceiling rose. Please order separately.