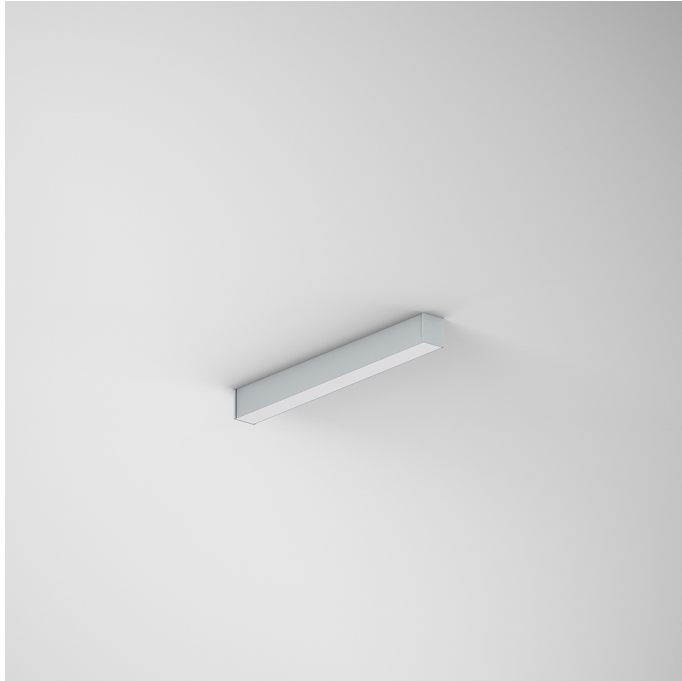
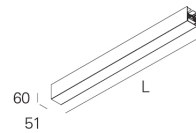
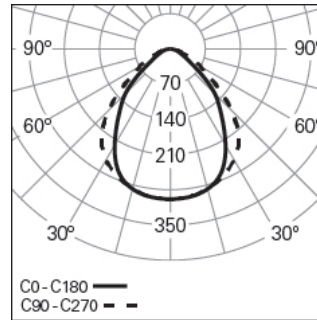


REBA 50 LITE /C LINE L0600 BGLARE DALI 830 G
ALUMINIUM PROFILE SYSTEMS

90883L006HG0300



Light distribution



L=562mm

PRODUCT DESCRIPTION

Application Areas: Offices, Hotels and residential, Public spaces, Retail, Education, Health and care
Mounting Type: Surface mounted
Control Gear Included: Yes
Control Gear: LED driver 220-240VAC-50/60Hz

REBA 50 LITE /C LINE L0600 BGLARE DALI 830 G

CHARACTERISTICS

Luminaire Type: Straight line luminaire
Luminaire Module: Middle (MID)
Insulation Class: I
Ingress Protection (IP): 40
Ambient Temperature Range (°C):]-5, 25[
Warranty (Years): 5
Current Supply Cable Entry Point: Back

MATERIALS

Body Material: Extruded aluminium profile
Finishing: Epoxy polyester powder coated
Colour: Grey (G)
Glow-wire Resistance (°C): 850

OPTICAL SYSTEM

Optical System: bGLARE - Microprismatic diffuser
Light Distribution: Direct
Beam Angle (°): 85

TECHNICAL DATA

Light Source: LED

Input Power (W): 8
Input Driver Voltage: 220-240V-50/60Hz
Power Factor (λ): 0,77
Luminaire Luminous Flux (lm): 756
Luminaire Efficacy (lm/W): 95
Unified Glare Rating (UGR): <19
LED Lifetime - Rated Median Useful Life: 80.000h @ L80, B10, Ta 25°C
CCT - Correlated Colour Temperature (K): 3000
Photobiological safety according to IEC 62471: Risk group 1 - Low-risk (RG1)
Colour Rendering Index (CRI): >80
Chromaticity Tolerance (MacAdam step): <3
This Product Contains a Light Source of Energy Efficiency Class: D
LED Module Forward Voltage Range (VF): 33,7
Power Supply Dimming: DALI 2
Central Battery Emergency Lighting System (VDC): 180-280
Maximum of Luminaires by Magnetic Circuit Breaker B16: <25
Inrush Current (A): 18
Pulse Duration (µs): 15

DIMENSIONS

L - Length (mm): 562
W - Width (mm): 51
H - Height (mm): 60
Net Weight (kg): 1.2

NOTES

- To complete the line, it is necessary to order the start kit separately;
- Dimensions do not include start kit. To complete the line add 6 mm to the length.