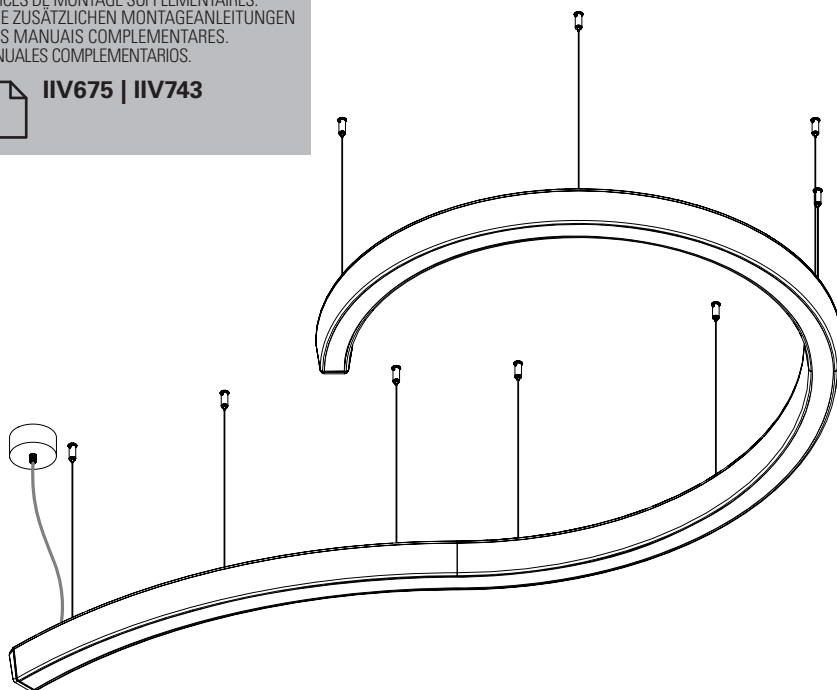


**CONCEPT S 35 D/I****EN** INSTALLATION INSTRUCTIONS**FR** NOTICE DE MONTAGE**DE** MONTAGEANLEITUNG**PT** INSTRUÇÕES DE MONTAGEM**ES** INSTRUCCIONES DE MONTAJE

**EN** READ THE SUPPLEMENTARY MANUALS.  
**FR** LIRE LES NOTICES DE MONTAGE SUPPLÉMENTAIRES.  
**DE** LESEN SIE DIE ZUSÄTZLICHEN MONTAGEANLEITUNGEN  
**PT** CONSULTE OS MANUAIS COMPLEMENTARES.  
**ES** LEA LOS MANUALES COMPLEMENTARIOS.

**IIV675 | IIV743**

Order code / Code com. / Bestell-Nr. / Código / Código: 90542... | 90547... | 90548... | 90549... | 90550...

**EN** Carefully read the installation instructions provided before installing the device. Safety and Maintenance: Scan here.**FR** Lire attentivement les notices de montage avant l'installation de l'appareil. Sécurité et Entretien: Scannez ici.**DE** Bitte lesen die mitgelieferte Montageanleitung vor der Montage des Geräts. Sicherheit und Wartung: Hier scannen.**PT** Leia atentamente as instruções de montagem fornecidas antes de instalar o aparelho. Segurança e Manutenção: Scan aqui.**ES** Lea atentamente las instrucciones de montaje proporcionadas antes de instalar el aparato. Seguridad y Mantenimiento: Escanea aquí.

# CONCEPT S 35 D/I



H

L1

1/16 (22,5°)



**DxL1xH (mm)**  
Ø7936x55x56

1/8 (45°)



**DxL1xH (mm)**  
Ø2926x55x56  
Ø4000x55x56  
Ø5789x55x56

1/4 (90°)



**DxL1xH (mm)**  
Ø1494x55x56  
Ø1853x55x56  
Ø2569x55x56  
Ø2926x55x56  
Ø4000x55x56

1/2 (180°)



**DxL1xH (mm)**  
Ø777x55x56  
Ø1136x55x56  
Ø1494x55x56  
Ø1853x55x56

LINE

**DxL1xH (mm)**  
1124x55x56  
1405x55x56  
1686x55x56  
1967x55x56  
2248x55x56  
2529x55x56  
2810x55x56

## TOOLS | OUTILS | WERKZEUG | FERRAMENTAS | HERRAMIENTAS

Umbrako 4 mm

TORX T10

Phillips screwdriver

Long nose pliers



EN USE GLOVES.

FR UTILISEZ DES GANTS.

DE HANDSCHUHE BENUTZEN.

PT UTILIZE LUVAS.

ES USE GUANTES.



**EN** LUMINAIRES WITH 24V DRIVERS DO HAVE AN AUDIBLE NOISE. IT IS NOT A FAILURE; DUE TO THE PWM FREQUENCIES, SOME COMPONENTS GENERATE NOISE. THIS NOISE CAN APPEAR LOUDER IN APPLICATIONS WHERE THE DRIVER IS INSTALLED IN PLACES WHERE THE SOUND BOUNCES, CREATING AN ECHO OR TUNNEL EFFECT.

**FR** LES LUMINAIRES ÉQUIPÉS DE DRIVERS 24V ÉMETTENT UN BRUIT AUDIBLE DÙ AUX FRÉQUENCES PWM. CE BRUIT PEUT ÊTRE AMPLIFIÉ DANS LES ESPACES OÙ LE SON SE RÉFLÈCHIT, CRÉANT UN EFFET D'ÉCHO OU DE TUNNEL. IL NE S'AGIT CEPENDANT PAS D'UN DÉFAUT, MAIS D'UNE CARACTÉRISTIQUE INTRINSÈQUE DU FONCTIONNEMENT DE CES COMPOSANTS.

**DE** LEUCHTEN MIT 24-VOLT-TREIBERN GEBEN AUFGRUND VON PWM-FREQUENZEN EIN HÖRBARES GERÄUSCH AB. DIESES GERÄUSCH KANN AN BEREICHEN VERSTÄRKT WERDEN, IN DENEN DER SCHALL REFLEKTIERT WIRD, WODURCH EIN ECHO ODER EIN TUNNELEFFEKT ENTSTEHT. DABEI HANDELT ES SICH JEDOCH NICHT UM EINEN DEFECT, SONDERN UM EIN UNVERMEIDBARES MERKMAL DES BETRIEBS DIESER KOMponentEN.

**PT** LUMINÁRIAS COM DRIVERS DE 24V EMITEM UM RUÍDO AUDÍVEL DEVIDO ÀS FREQUÊNCIAS PWM. ESSE SOM PODE SER AMPLIFICADO EM LOCAIS ONDE O SOM REFLETE, CRIANDO UM EFEITO DE ECO OU TÚNEL. NO ENTANTO, ISSO NÃO REPRESENTA UMA FALHA, MAS SIM UMA CARACTERÍSTICA INERENTE AO FUNCIONAMENTO DESSOS COMPONENTES.

**ES** LAS LUMINARIAS CON DRIVERS DE 24 V EMITEN UN RUIDO PERCEPTIBLE DEBIDO A LAS FRECUENCIAS PWM. ESTE RUIDO PUEDE AMPLIFICARSE EN LUGARES DONDE EL SONIDO SE REFLEJA, CREANDO UN ECO O EFECTO TÚNEL. SIN EMBARGO, NO SE TRATA DE UN FALLO, SINO DE UNA CARACTERÍSTICA INHERENTE AL FUNCIONAMIENTO DE ESTOS COMPONENTES.



**EN** ASSEMBLE THE MODULE IN THE DIRECTION OF THE ARROW.

**FR** ASSEMBLEZ LE MODULE DANS LE SENS DE LA FLÈCHE.

**DE** MONTIEREN SIE DAS MODUL IN PFEILRICHTUNG.

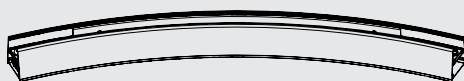
**PT** MONTAR O MÓDULO NO SENTIDO DA SETA.

**ES** MONTE EL MÓDULO EN LA DIRECCIÓN DE LA FLECHA.



## CONCEPT S 35 D/I

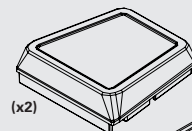
90542... | 90547... | 90548... | 90549... | 90550...



(x1)

## START KIT KIT DÉBUT DE LIGNE START KIT START KIT START KIT

9230...



(x2)

(x2)

(x4)



(x2)



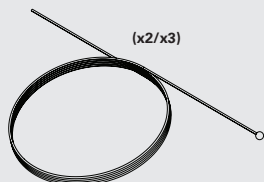
(x4)

**S11 SUSPENSION**  
**SUSPENSION S11**  
**SEILABHÄNGUNG S11**  
**SUSPENSÃO S11**  
**SUSPENSIÓN S11**



**IIV675**

9129...



(x2/x3)



(x2/x3)



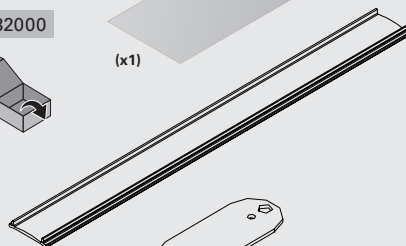
(x2/x3)

**BODY CONNECTOR KIT**  
**UNION KIT**  
**VERBINDUNG**  
**KIT DE UNIÃO**  
**KIT DE UNIÓN**

932000



(x1)



(x2)



(x2)



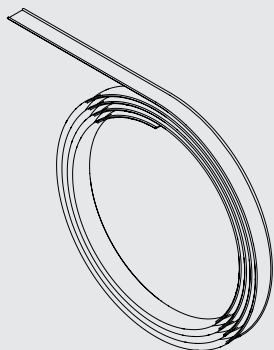
(x4)



(x2)

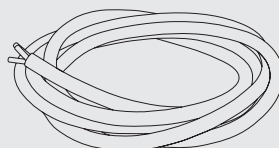
**DIFFUSER**  
**DIFFUSEUR**  
**DIFUSOR**  
**DIFUSOR**  
**DIFUSOR**

9857...



**CURRENT SUPPLY CABLE**  
**CÂBLE D'ALIMENTATION**  
**EINSPEISUNGSKABEL**  
**CABO DE ALIMENTAÇÃO**  
**CABLE DE ALIMENTACIÓN**

9400... | 9403...



(x1)

**CEILING ROSE**  
**PATÈRE DE SUSPENSION**  
**DECKENDOSE**  
**CAIXA DE ALIMENTAÇÃO**  
**BASE DE TECHO**

971300...

RECESSED CEILING ROSE T5 D90  
 PATÈRE DE SUSPENSION ENCASTRÉE T5 D90  
 DECKENDOSE ZUM EINBAU T5 D90  
 CAIXA DE ALIMENTAÇÃO ENCASTRAR T5 D90  
 BASE DE TECHO DE EMPOTRAR T5 D90



(x1)



(x2/x4/x6)



(x1)



(x1)



**IIV966**

978700...

RECESSED CEILING ROSE T27 D90  
 PATÈRE DE SUSPENSION ENCASTRÉE T27 D90  
 DECKENDLOSEN ZUM EINBAU T27 D90  
 CAIXA DE ALIMENTAÇÃO ENCASTRAR T27 D90  
 BASE DE TECHO DE EMPOTRAR T27 D90



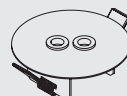
(x2)



(x8)



(x1)



(x1)

**CEILING ROSE**  
**PATÈRE DE SUSPENSION**  
**DECKENDOSE**  
**CAIXA DE ALIMENTAÇÃO**  
**BASE DE TETO**

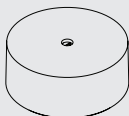
**+ **  
**IIV881**

979000...

SURFACE MOUNTED CEILING ROSE T64 D85  
 PATÈRE DE SUSPENSION SAILLIE T64 D85  
 DECKENDOSE ZUM ANBAU T64 D85  
 CAIXA DE ALIMENTAÇÃO SALIENTE T64 D85  
 BASE DE TETO DE SUPERFICIE T64 D85



(x7)



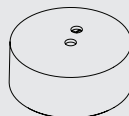
(x1)

979003...

SURFACE MOUNTED CEILING ROSE T69 D85  
 PATÈRE DE SUSPENSION SAILLIE T69 D85  
 DECKENDOSE ZUM ANBAU T69 D85  
 CAIXA DE ALIMENTAÇÃO SALIENTE T69 D85  
 BASE DE TETO DE SUPERFICIE T69 D85



(x9)




(x1)

**CONCEPT S 35 D/I**


1/16 (22,5°)

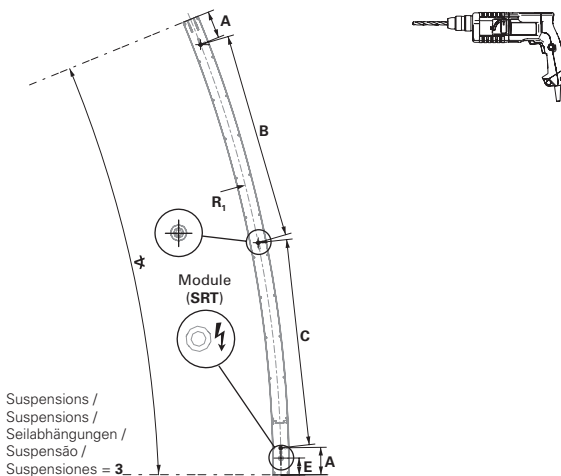


Left and Right module (SRT)

CONCEPT S 35 D/I						
 (mm)	✂	R <sub>1</sub>	A	B	C	E
ø7936x55x56	22,5	3940,5	90	593	772	56

Left and Right module (MID/END)


CONCEPT S 35 D/I						
 (mm)	✂	R <sub>1</sub>	A	B	C	E
ø7936x55x56	22,5	3940,5	90	593	772	-




1/8 (45°)

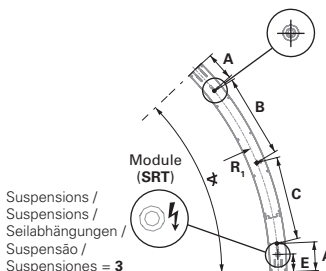


Left and Right module (SRT)

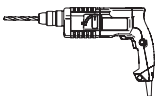
CONCEPT S 35 D/I						
 (mm)	✂	R <sub>1</sub>	A	B	C	E
ø2926x55x56	45	1435,5	90	472	472	56
ø4000x55x56	45	1972,5	90	592	770	56
ø5789x55x56	45	2867	90	1030	1030	56

Left and Right module (MID/END)

CONCEPT S 35 D/I						
 (mm)	✂	R <sub>1</sub>	A	B	C	E
ø2926x55x56	45	1435,5	90	472	472	-
ø4000x55x56	45	1972,5	90	592	770	-
ø5789x55x56	45	2867	90	1030	1030	-



CONCEPT S 35 D/I



1/4 (90°)

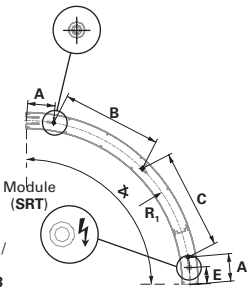


Left and Right module (SRT)

CONCEPT S 35 D/I						
⊠ (mm)	⌀	R <sub>1</sub>	A	B	C	E
⌀1494x55x56	90	719,5	90	466	466	56
⌀1853x55x56	90	899	90	518	688	56
⌀2569x55x56	90	1257	90	878	878	56
⌀2926x55x56	90	1435,5	90	1015	1015	56
⌀4000x55x56	90	1972,5	90	1426	1426	56

Left and Right module (MID/END)

CONCEPT S 35 D/I						
⊠ (mm)	⌀	R <sub>1</sub>	A	B	C	E
⌀1494x55x56	90	719,5	90	466	466	-
⌀1853x55x56	90	899	90	518	688	-
⌀2569x55x56	90	1257	90	878	878	-
⌀2926x55x56	90	1435,5	90	1015	1015	-
⌀4000x55x56	90	1972,5	90	1426	1426	-



Suspensions /  
Suspensions /  
Seilabhängungen /  
Suspensão /  
Suspensiones = 3

1/2 (180°)

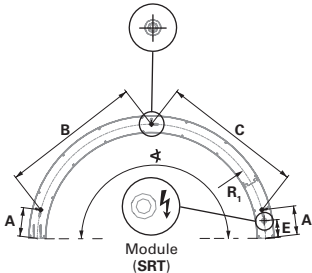


Left and Right module (SRT)

CONCEPT S 35						
⊠ (mm)	⌀	R <sub>1</sub>	A	B	C	E
⌀777x55x56	180	361	90	442	442	56
⌀1136x55x56	180	540,5	90	626	764	56
⌀1494x55x56	180	719,5	90	952	952	56
⌀1853x55x56	180	899	90	1137	1271	56

Left and Right module (MID/END)

CONCEPT S 35						
⊠ (mm)	⌀	R <sub>1</sub>	A	B	C	E
⌀777x55x56	180	361	90	442	442	-
⌀1136x55x56	180	540,5	90	626	764	-
⌀1494x55x56	180	719,5	90	952	952	-
⌀1853x55x56	180	899	90	1137	1271	-



Suspensions /  
Suspensions /  
Seilabhängungen /  
Suspensão /  
Suspensiones = 3

Linear

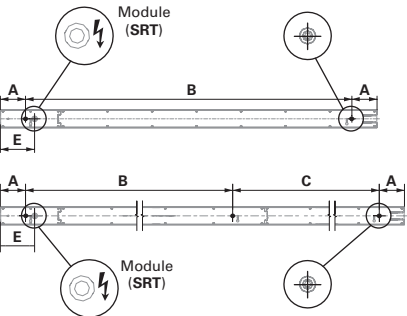
(SRT)

CONCEPT S 35					
⊠ (mm)	A	B	C	E	
1124x55x56	90	944	-	102	
1405x55x56	90	1225	-	102	
1686x55x56	90	1506	-	102	
1967x55x56	90	893,5	893,5	102	
2248x55x56	90	1034	1034	102	
2529x55x56	90	1084,5	1264,5	102	
2810x55x56	90	1225	1404	102	

(MID/END)

CONCEPT S 35					
⊠ (mm)	A	B	C	E	
1124x55x56	90	944	-	-	
1405x55x56	90	1225	-	-	
1686x55x56	90	1506	-	-	
1967x55x56	90	893,5	893,5	-	
2248x55x56	90	1034	1034	-	
2529x55x56	90	1084,5	1264,5	-	
2810x55x56	90	1225	1404	-	

Suspensions /  
Suspensions /  
Seilabhängungen /  
Suspensão /  
Suspensiones = 2 / 3



⊠ (mm)  
1124x55x56  
1405x55x56  
1686x55x56

⊠ (mm)  
1967x55x56  
2248x55x56  
2529x55x56  
2810x55x56

# CONCEPT S 35 D/I

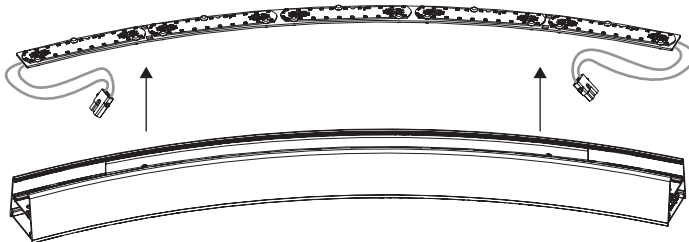


TO INSTALL THE SUSPENSION AND THE  
CEILING SEE:  
POUR MONTAGE DE LA SUSPENSION ET  
PATERE DE SUSPENSION LIRE:  
ZUM EINBAU DER SEILABHÄNGUNG UND  
DER DECKENDOSE BITTE LESEN SIE:  
PARA INSTALAR SUSPENSÃO E CAIXA DE  
ALIMENTAÇÃO LER:  
PARA INSTALAR LA SUSPENSION Y LA BASE  
DE TECHO LEER:



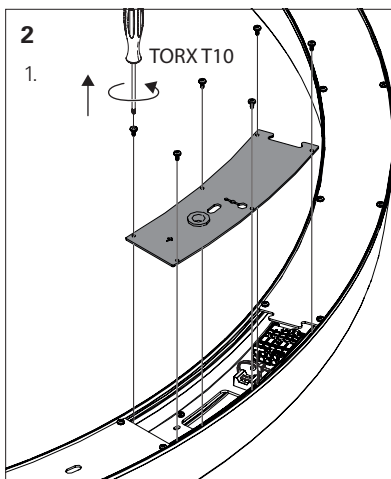
**IIV675**  
**IIV743**

**1**

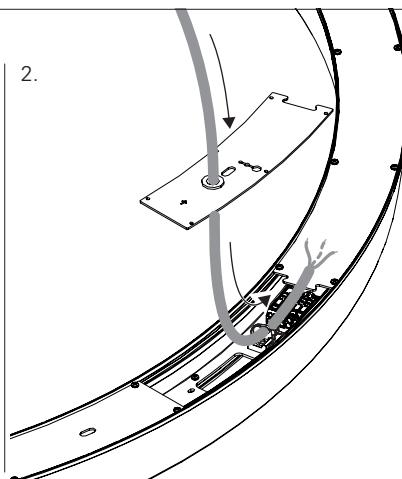


**2**

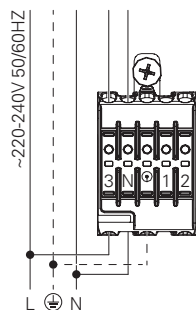
1.



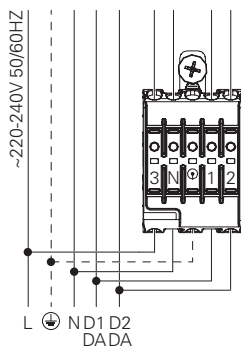
2.



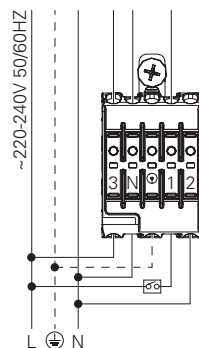
### 3 - HF



### DALI

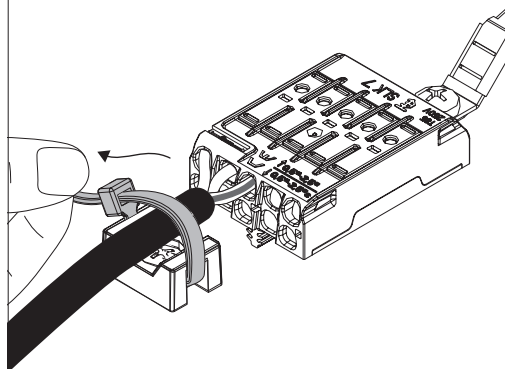


### SWD

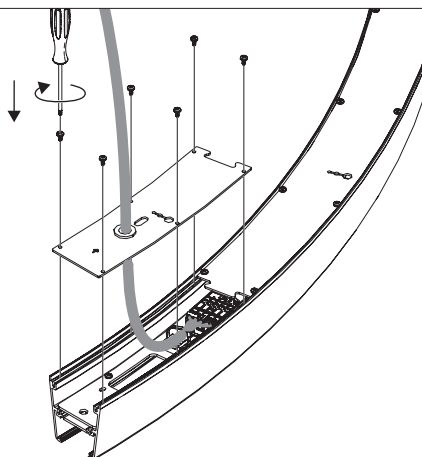


### 4

1.



2.



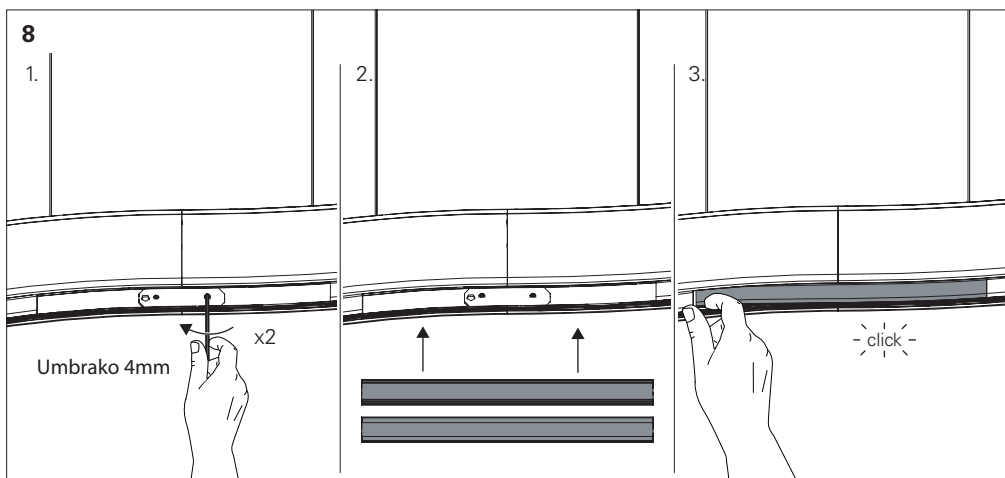
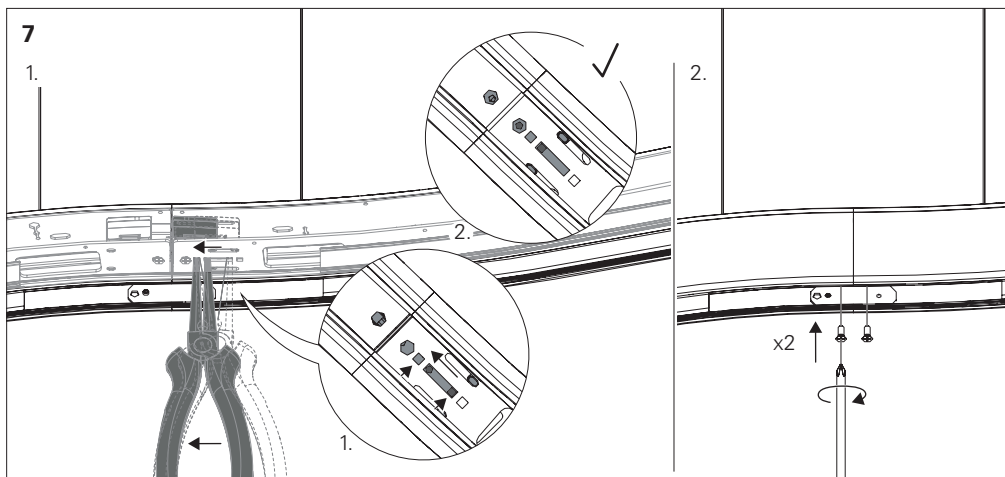
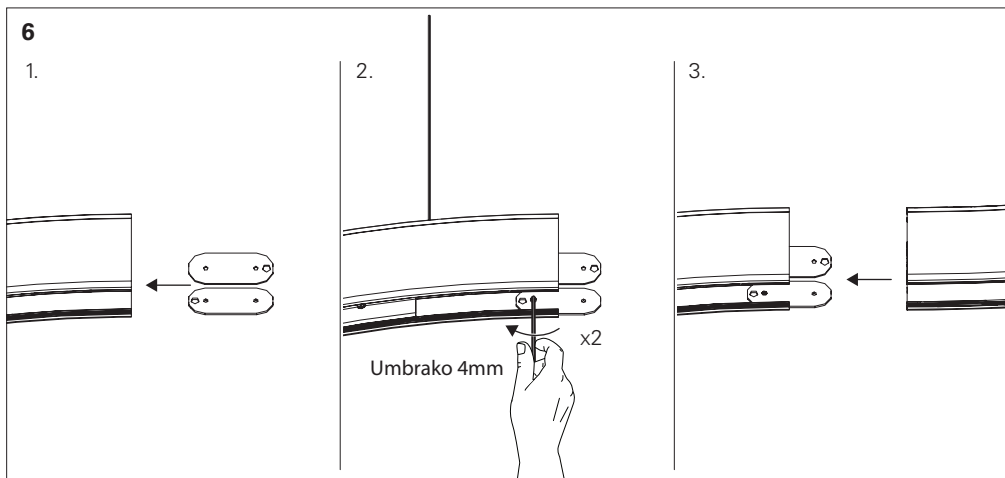
### 5



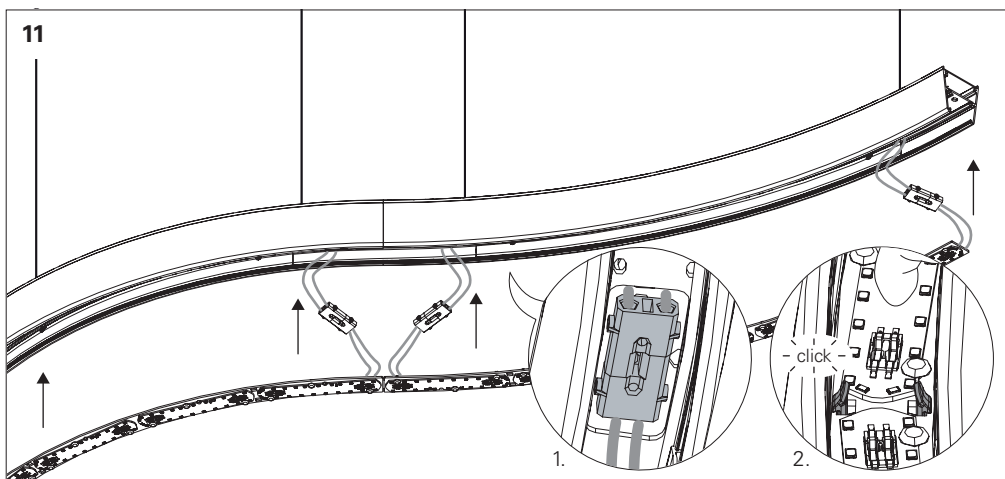
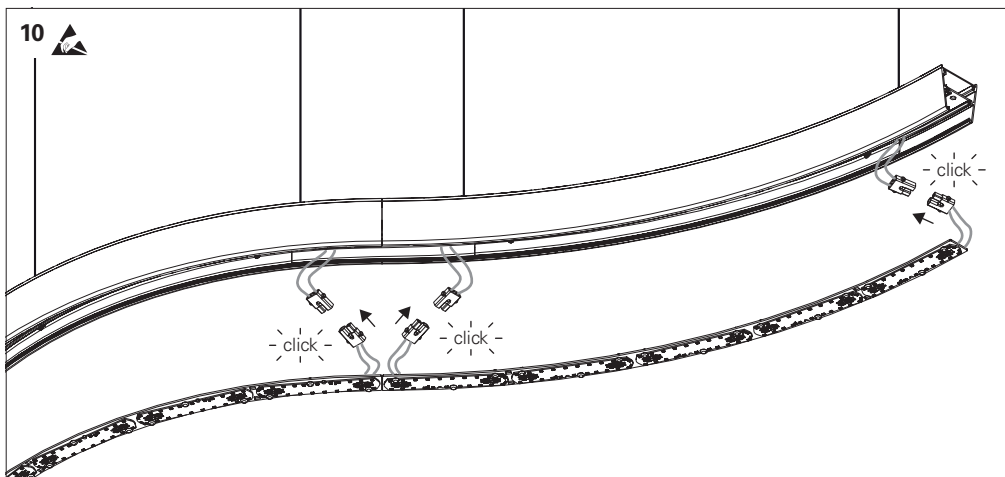
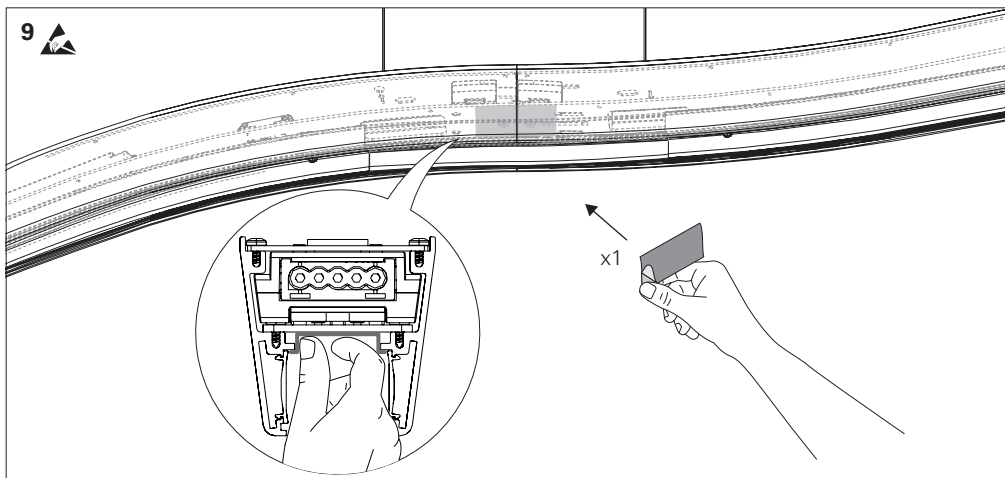
TO INSTALL THE SUSPENSION AND THE CEILING SEE:  
POUR MONTAGE DE LA SUSPENSION ET PATÈRE DE SUSPENSION LIRE:  
ZUM EINBAU DER SEILABHÄNGUNG UND DER DECKENDOSE BITTE LESEN SIE:  
PARA INSTALAR SUSPENSÃO E CAIXA DE ALIMENTAÇÃO LER:  
PARA INSTALAR LA SUSPENSIÓN Y LA BASE DE TECHO LEER:



**IIV675**  
**IIV743**

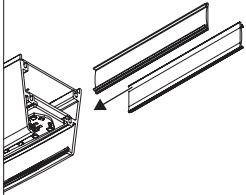




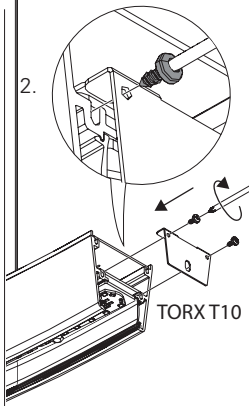


12

1.

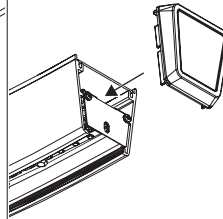


2.

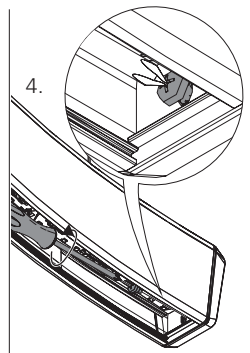


TORX T10

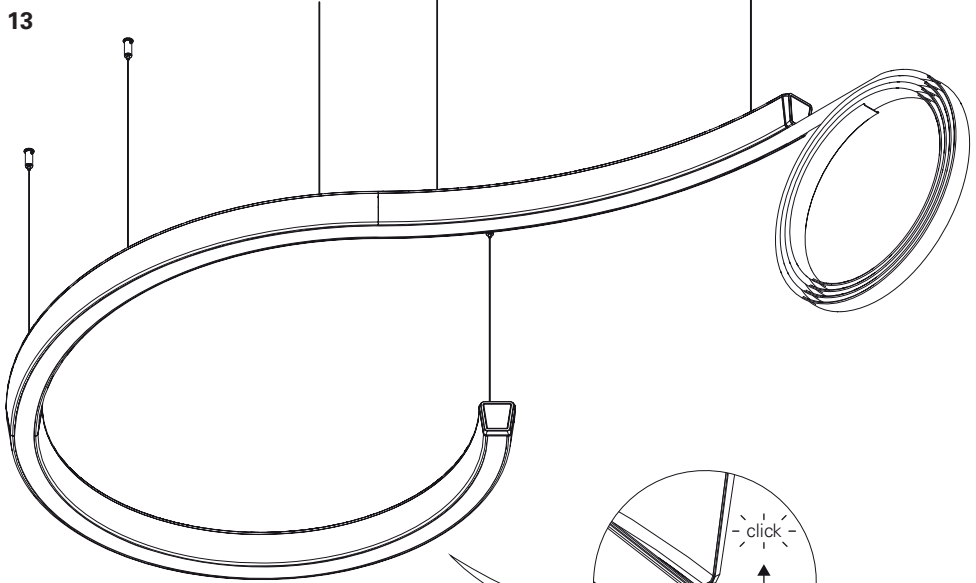
3.



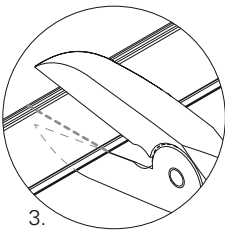
4.



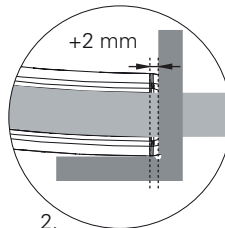
13



1.



3.



2.