

OPTICAL SYSTEM | SYSTÈME OPTIQUE | OPTISCHES SYSTEM | SISTEMA ÓTICO | SISTEMA ÓPTICO

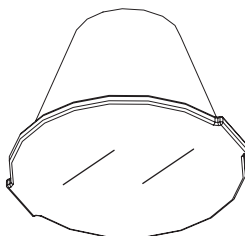
EN INSTALLATION INSTRUCTIONS

FR NOTICE DE MONTAGE

DE MONTAGEANLEITUNG

PT INSTRUÇÕES DE MONTAGEM

ES INSTRUCCIONES DE MONTAJE



Order code / Code com. / Bestell-Nr. / Código / Código : 926200 | 926201 | 926202



EN Carefully read the instalation instructions provided before installing the device. Safety and Maintenance: Scan here.

FR Lire attentivement les notices de montage avant l'installation de l'appareil. Sécurité et Entretien: Sancez ici.

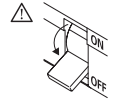
DE Bitte lesen die mitgelieferte Montageanleitungen vor de Montage des Geräts. Sicherheit und Wartung: Hier scannen.

PT Leia atentamente as instruções de montagem fornecidas antes de instalar o aparelho. Segurança e Manutenção: Scan aqui.

ES Lea atentamente las instrucciones de montaje proporcionadas antes de instalar el aparato. Seguridad y Mantenimiento: Escanea aqui.



OPTICAL SYSTEM SYSTÈME OPTIQUE OPTISCHES SYSTEM SISTEMA ÓTICO SISTEMA ÓPTICO



EN USE GLOVES.
FR UTILISEZ DES GANTS.
DE HANDSCHÜHE BENUTZEN.
PT UTILIZE LUVAS.
ES USE GUANTES.

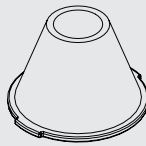


OPTICAL SYSTEM SYSTÈME OPTIQUE OPTISCHES SYSTEM SISTEMA ÓTICO SISTEMA ÓPTICO

926200 | 926201 | 926202

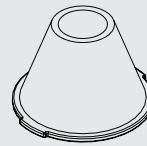


14° LENS
 LENTE 14°
 14° LINSE
 LENTE 14°
 LENTE 14°



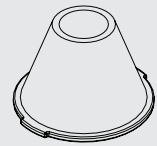
(x1)

47° LENS
 LENTE 47°
 47° LINSE
 LENTE 47°
 LENTE 47°



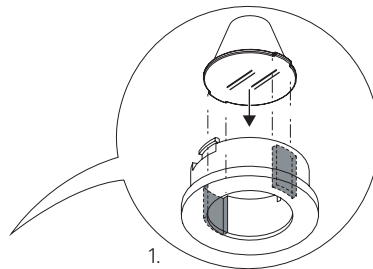
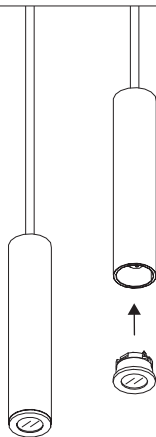
(x1)

OVAL LENS
 LENTE OVALE
 OVALE LINSE
 LENTE OVAL
 LENTE OVAL

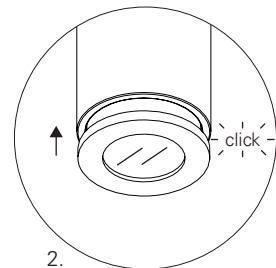


(x1)

1



1.

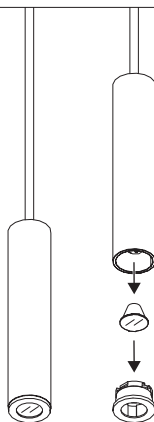


2.

OPTICAL SYSTEM

EN REPLACEMENT
FR REMPLACEMENT
DE ERSATZ
PT SUBSTITUIÇÃO
ES RECAMBIO

2



2.1

